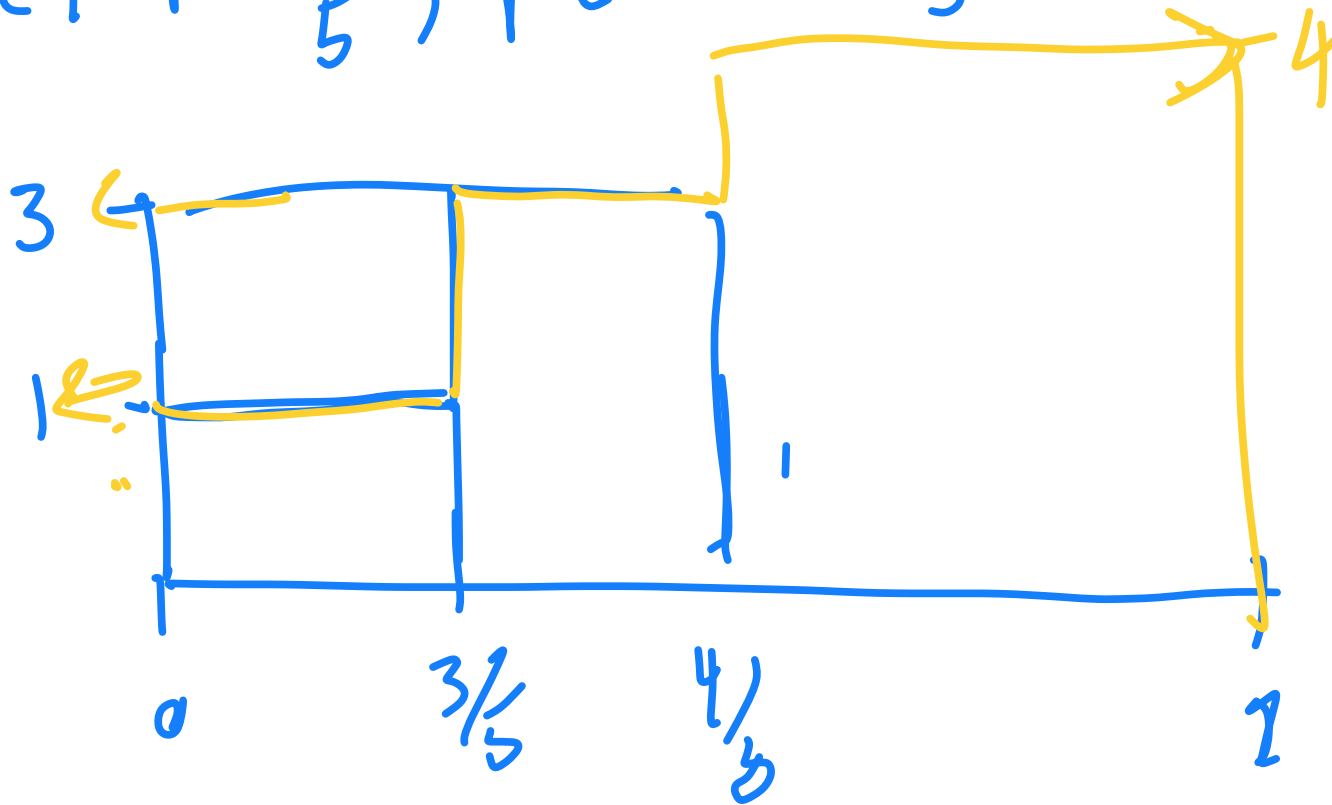


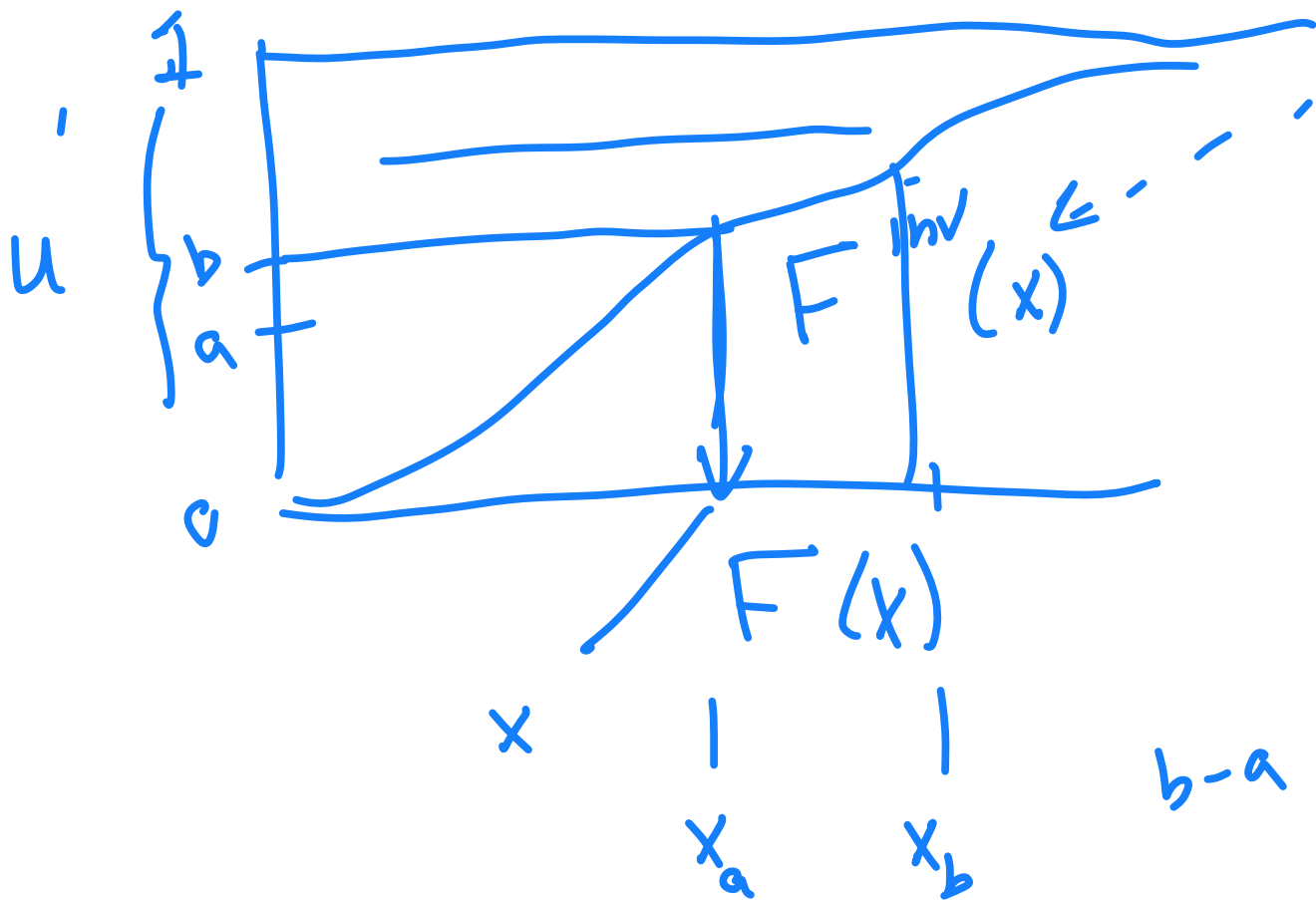
4 RV.

$$P(Y=1) = \frac{3}{5}, \quad P(Y=3) = \frac{1}{5}, \quad P(Y=4) = \frac{1}{5}$$



$$y = \begin{cases} 0 \leq u \leq \frac{3}{5} & 1 \\ \frac{3}{5} < u \leq \frac{4}{5} & 3 \\ \frac{4}{5} < u \leq 1 & 4 \end{cases}$$

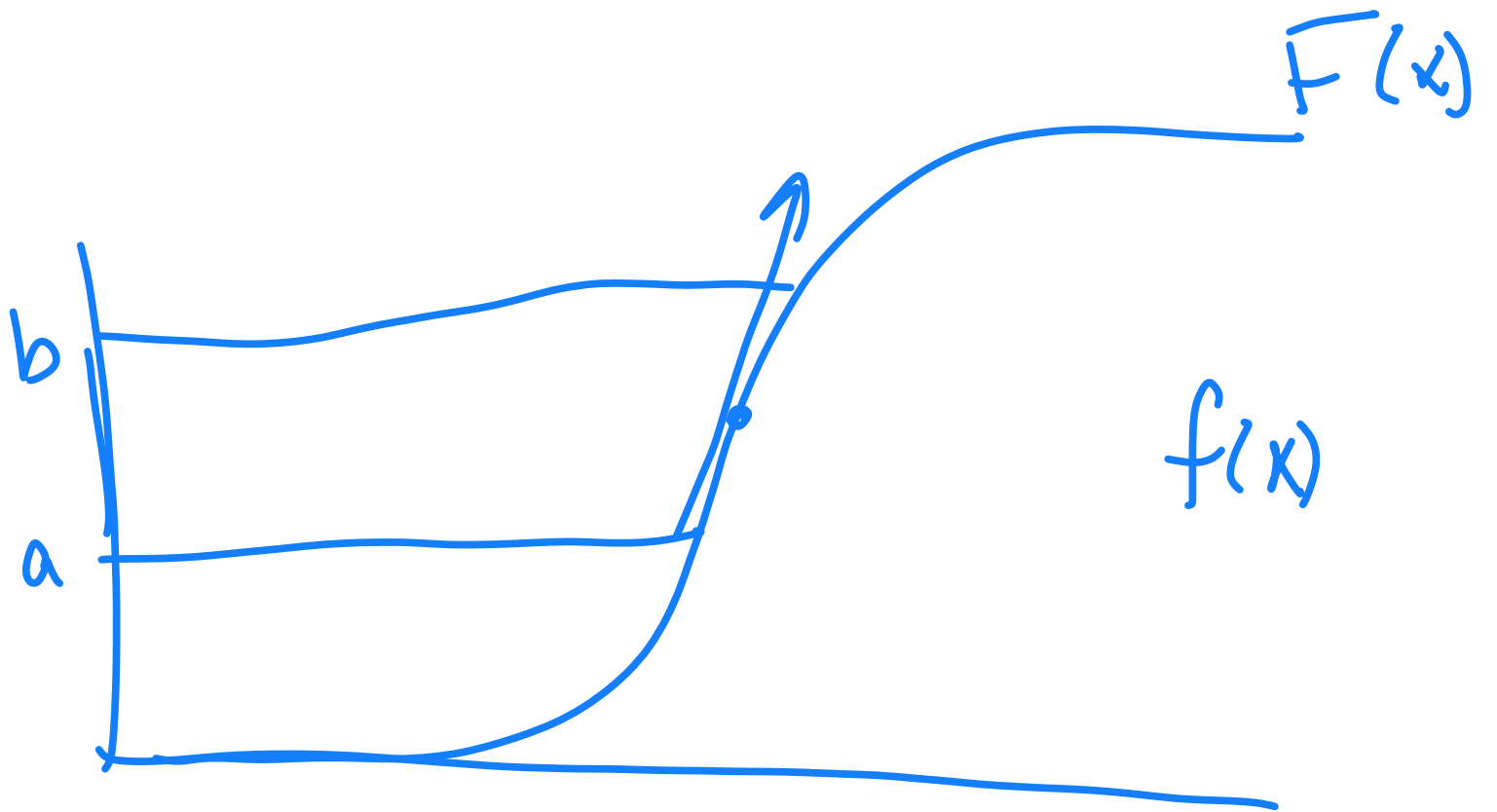
Cont RV's in Sim



quantile

$f(x)$ - pdf.

$b-a$



Generate samples from $\text{Exp}(\lambda)$

$$f(x) = \lambda e^{-\lambda x}$$

$$F(x) = 1 - e^{-\lambda x}$$

$$1 - e^{-\lambda x} = u \quad \Rightarrow$$

$$\ln(1-u) = -\lambda x$$

$$1 - u = e^{-\lambda x}$$

$$x = -\frac{\ln(1-u)}{\lambda} = -\frac{\ln(u)}{\lambda}$$