

## Bayesian Computational Sensor Networks: Small-Scale Structural Health Monitoring

Wenyi Wang, Anshul Joshi, Nishith Tirpankar, Philip Erickson,  
Michael Cline, Palani Thagaraj, and Thomas C. Henderson<sup>1</sup>

### Abstract

The Bayesian Computational Sensor Network methodology is applied to small-scale structural health monitoring. A mobile robot, equipped with vision and ultrasound sensors, maps small-scale structures for damage (e.g., holes, cracks) by localizing itself and the damage ~~on in the a~~ map. The combination of vision and ultrasound reduces the uncertainty in damage localization. The data storage and analysis takes place exploiting cloud computing mechanisms, and there is also an off-line computational model calibration component which returns information to the robot concerning updated on-board models as well as proposed sampling points ~~to measure~~. The approach is validated in a set of physical experiments.

### 1. General Overview

The goal of structural health monitoring (SHM) is to determine the existence and extent of any flaws in a ~~materials~~ structure. SHM is applied to ~~a~~ wide variety of structures, ranging from buildings, bridges, and roads ~~as well as to~~ nuclear reactors, ~~to and~~ aircraft. Clearly ~~the failures in of~~ such systems can lead to large-scale catastrophe resulting ~~in death, and injury, and broader damage~~, and it is therefore important to correctly detect problems as early as possible. However, every structure has its own particular properties, and detection systems often use a standard set of parameters which may result in damaged areas being overlooked or cause the report of damage when none exists.

~~We have~~~~This Chapter~~ ~~discusses methods and capabilities~~ developed ~~by the authors in the context of using~~ the Computational Sensor Network (CSN) approach [14,15] which uses models of the object of study (e.g., the airplane wing material ~~and health condition~~s) as well as models of the sensor network in order to improve understanding of both and to reduce the uncertainty in the models. ~~This~~~~The CSN approach~~ requires relating the properties of interest in the sensor network (e.g., ~~sensor position, bias, etc.~~) to the sensed data concerning the physical ~~phenomenon~~~~process involved in the measurement~~ (e.g., sound waves, temperature, etc.).

CSN's are designed and developed using the model-based approach which provides a strong scientific computing foundation as well as the basis for robust software engineering practice. CSN is comprised of three main components: (1) models of ~~physical phenomena~~, (2) models of sensor-actuator systems, and (3) sensor network computational models. Computational modeling requires the elucidation of principles to identify the state of the sensed phenomenon as well as the sensor network. The operational system development is then guided by these methods which are mapped onto the ~~system architecture~~. Such a real-time computational mapping allows system parameters to be changed according to real-time performance measures.

~~The~~ Verification and Validation (V & V) methodology [20] applied in high performance computing ~~can be~~ incorporated in the CNS framework; ~~i.e., model~~

<sup>1</sup>This material (Abstract and Sections 2 through 7) is reprinted from Publication "Bayesian Computational Sensor Networks: Small-Scale Structural Health Monitoring," , Procedia Computer science, Vol. 51, W. Wang, A. Joshi, N. Tirpankar, P. Erickson, M. Cline, P. Thagaraj and T.C. Henderson, pp. 2603 - 2612, 2015, with permission from Elsevier.

**Commented [FD1]:** Add a sentence or two in the abstract on how the work uses/relates to DDDAS

**Commented [FD2]:** Use 3<sup>rd</sup> person narrative (not "we", "our", etc)  
Also the document should be referred to as "Chapter", not "paper"

**Commented [FD3]:** The physical phenomena involved here are not only those involved in the instrumentation (above), but also the conditions of the "object of study", e.g. stresses, distortion of the object, cracks created, etc.

**Commented [FD4]:** Need to explain here what "system architecture" you are referring to. There are several aspects: a) the network of sensors is one; b) the other is the wing, or the aileron, or the fuselage, etc; and c) the DDDAS-based software framework you are creating. Which one is referred to here? It may be good to cite all three, and then state which one(s) you address.

**Commented [FD5]:** Please add a few sentences here on how DDDAS is applied.

**Commented [FD6]:** How is the transition to this paragraph tied with the preceding paragraph?

**Commented [FD7]:** Being speculative is not the strongest way to present the potential of the referenced method. Is that something that's addressed in the Chapter? If so it should be stated more specifically.

**Commented [FD8]:** Need to state here what aspect the V&V is applied to; the effectiveness of using the CSN for detecting damage? Or the effectiveness of the placement of the sensors - and the entire sensor network and it's operation in sensing, for example the SHM of a wing section?

**Commented [FD9]:** It would be good to include in the Chapter some updates, since 2015. For example, more recent references to this work by you or others. And in fact you do (BRECCIA, etc). Any directions this work led you in the more recent time.  
So it would be better to say that most (or part) of the material is from the prior publication (with permission), but I think just stating it's a "reproduction" you miss the opportunity to showcase the impact of the earlier work.

implementations may be verified for correctness and numerical properties like convergence and error. It is also possible to embed tests in the executable to check correctness during execution. CSN's offer a novel aspect in that they can sense and interact with the environment, and thus, can refute or confirm model parameters or structure properties by running validation experiments on the fly. ~~As pointed out earlier~~In addition, the structure of the measurement system can be estimated using the ~~phenomenon~~-model representing the physical phenomenon. ~~E.g.~~, the partial differential equation describing heat flow can be combined with known temperatures at fixed (but unknown) locations in order to determine the positions of the sensors. ~~We have, in fact, applied this~~ In fact, this the CSN method has been applied in a different application area, namely an avalanche prediction system which modeled heat flow through snow [26]. Finally, real-time computational steering ~~may be~~ performed by (1) embedding verification and validation functions into the executable code, and (2) modeling component performance in terms of a statistically meaningful characterization of output features conceptually defined by the user.

The Dynamic Data Driven Applications Systems (DDDAS) approach provides away to develop custom models dynamically (e.g., material density, geometry, propagation properties, etc.) ~~dynamically~~-based on data acquired during inspection. Such improved models also allow the determination of more accurate state information about the sensor system (e.g., location, orientation, bias, etc.) usually within verse solutions. In the application presented here, a mobile robot moves along a metal plate and uses sound waves (ultrasound) to detect cracks and holes and reports their locations and dimensions as accurately as possible. A Simultaneous Localization And Mapping (SLAM) algorithm is used to construct a map of the flaws, and at the same time, the holes and cracks are used as landmarks in the SLAM method to improve the pose estimation of the robot. In addition, off-line software agents are used to dynamically calibrate the physics models and to propose optimal new sensing locations so as to reduce the overall uncertainty of the mapping process.

~~This~~ application of these methods, involved the development of a cloud-based computational and storage system where interactions between the mobile robot platform and the other computational agents are mediated by a highly customizable data sharing model optimized as sockets, and this work is described in this Chapter. Subsequently, this ~~This~~ the cloud-based approach has been extended to perform geospatial intelligence analysis in the system entitled BRECCIA system [23,24,25]-1; BRECCIA receives information from humans (as logical sentences), simulations (e.g., weather or environmental predictions), and sensors (e.g., cameras, weather stations, microphones, etc.) where each piece of information has an associated uncertainty. ~~This~~ The BRECCIA system has also been applied to Unmanned Aerial Systems (UAS) flight planning in urban environments.

## 2. State-of-the-Art, Challenges and Method

Structural health monitoring equipment for of-aircraft inspection poses a significant ~~problem in their~~ problems including real-time exploitation-utilization, operation, and maintenance. To address ~~this the issue~~ challenges involved, the major specific ~~objectives of our the work presented here are aimed to~~ developments include:

1. Exploiting Bayesian Computational Sensor Networks (BCSN)[14] to detect and identify structural damage. ~~Here we demonstrate~~ And specifically presented is the using combination of a Simultaneous Localization and Mapping (SLAM) method with the use of and ultrasound measurements to map damage in a small-scale structure.
2. Exploit Designing an active feedback methodology using model-based sampling advice which informs the sample point selection during path planning for the monitoring task.

**Commented [FD10]:** Need to say here why the use of the heat-flow model for monitoring snow is relevant to SHM of a wing. State what aspects are akin.

**Commented [FD11]:** Being speculative is not the strongest way to present the potential of the referenced method. Be more specific.

**Commented [FD12]:** What do you mean by "inspection"? DDDAS is not limited only to that - (static) inspection. The value of DDDAS is that one can improve (or make more accurate) a model using, at runtime, targeted data (archival or collected in real-time) to augment the model and make it more accurate &/or faster using the actual data.

**Commented [FD13]:** This is where DDDAS would be applied

**Commented [FD14]:** And yes, this the reverse in the DDDAS loop – the model controlling the instrumentation – where to place the sensors or what sensor measurements to conduct, and/or what actuation to apply for example dampening forces to mitigate for example the propagation of a crack.

**Commented [FD15]:** Is this part of the work described here? State so.

**Commented [FD16]:** Provide Reference(s)

3. Providing a rigorous model-based systematic treatment of the uncertainty in the process, including stochastic uncertainties of system states, unknown model parameters, dynamic parameters of sensor nodes, and material damage assessments.

4. Achieving goals 1-3 by exploiting integrating the approaches (1-3) in a cloud computing environment.

This work addresses 3 of the 4 DDDAS (Dynamic Data-Driven Analysis Systems) interdisciplinary research components: applications modeling, advances in mathematics and statistical algorithms, and application measurement systems and methods. More specifically, the design addresses several questions/challenges articulated in the DDDAS-InfoSymbiotics 2010 Report [8] by Working Group 3 (WG3) Large and Heterogeneous Data from Distributed Measurement & Control Systems (Alok Chaturvedi, Adrian Sandhu): “DDDAS inherently involves large amounts of data that can result from heterogeneous and distributed sources which require analysis before automatically integrating them to the executing applications that need to use the data.”

Figure 1 shows a conceptual layout of the case-study problem addressed here. The mobile

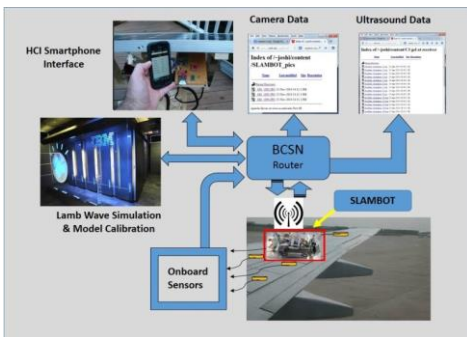


Figure 1: Small-scale Structural Health Monitoring in the Cloud.

robot (SLAMBOT) is placed on the structure to be monitored (here an aircraft wing), and performs its analysis by interacting with storage and computational agents in the cloud. In our study presented here, the interaction is mediated by means of a highly customizable data sharing model which provides low latency between sensing and computational resources (using optimized socket applications), and dynamic routing. The various components include (1) the SLAMBOT, (2) storage capabilities for image and ultrasound data, (3) off-line simulation agents which can dynamically calibrate models and provide optimal sample point locations, and (4) some form of HCI, a human-computer interface (HCI) agent (e.g., smart phone app or data analysis center). For another view, see [4].

In the remainder of the paper, we are described describes the following aspects of the small-scale structural health monitoring system:

1. **Robot Monitoring Agents:** a high-level monitoring agent is developed using the Contract Net approach; where this agent is invoked by the human inspector.

**Commented [FD17]:** It will be good here to include a diagram showing the DDDAS loops.

**Commented [FD18]:** Applying DDDAS does not mean addressing modeling, mathematical/statistical algorithms and measurement (\*3 out-of-the 4). The DDDAS paradigm is the feedback control loop between an executing model (of a system) and the instrumentation (of the system), where instrumentation data (measurements) are dynamically incorporated into the model, and in return the model controls the instrumentation. The need for models, algorithms, measurements, systems software are aspects of the tools needed to enable the paradigm. So please correct the wording in this paragraph, to state: The work here applies the DDDAS paradigm....

~~It~~ ~~The agent~~, in turn, contracts with the SLAMBOT to gather damage location information in terms of a map created during the ultrasound examination of the small-scale structure.

2. **Ultrasound Analysis Model:** An ultrasound range sensor is described which exploits a computational model of Lamb wave propagation through the structure to be monitored.
3. **Cloud Computing Architecture:** the cloud computing architecture allows various agents to efficiently exchange data and information.
4. **Validation Experiment:** a physical experiment using an aluminum plate, and a mobile robot is described which provides bounds on the uncertainty of the operation of the monitoring process.

### 3. Robot Monitoring Agents

The monitoring task is divided between a virtual agent which manages the monitoring process (the *manager*), and a set of inspection agents (the *contractors*) which are physical robots capable of mapping damage in the structure of interest. In addition, the *manager* may request bids on other aspects of the problem (e.g., computational simulations for model calibration, etc.). ~~This~~ ~~The agent-based~~ approach has been chosen so as to make the solution more general and applicable to a wide variety of scenarios. For example, in aircraft inspection, ~~it we is envisioned that~~ a set of SLAMBOT type robots which may be tracked ground vehicles, or quadrotors, ~~that~~ are available to provide inspections, ~~but~~ which must be contracted to perform the work. The *Contract Net* protocol [27] is used ~~which follows~~ the following sequence:

- The *manager* agent issues a general broadcast task announcement with an eligibility specification, a task abstract, a bid specification and an expiration time.
- The *contractor* agents bid on tasks they can handle, and provide some information about their capabilities.
- The *manager* agent then awards bids (perhaps multiple).
- The *contractor* agents then proceed with the task and may exchange information with other agents as necessary to complete the task. They also store the acquired data in the cloud so that it is available to other agents involved in the process. Once the task is completed they announce that to the *manager* and submit a final report.

### The SLAMBOT

~~In~~ ~~the~~ current version of the system, ~~we have employs developed~~ the SLAMBOT ~~developed by the authors~~ [32], ~~as depicted~~ ~~(see in~~ Figure 2). The SLAMBOT is equipped with a camera for SLAM, and two ultrasound sensors (front and back) for damage analysis ~~in~~ ~~of~~ the structure. When taking ultrasound readings, the SLAMBOT lifts itself up on the ultrasound sensors so as to press them firmly against the material surface. The SLAMBOT is built on a ~~Systronix Trackbot~~ chassis and is a differential drive robot. The vision, motion, actuation and localization algorithms are implemented on-board by a minicomputer

Commented [FD19]: Reference

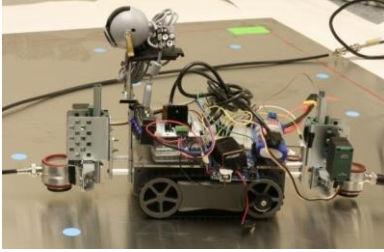


Figure 2: SLAMBOT for Structural Health Monitoring.

(*pcDuino*), which runs a version of the *Ubuntu* operating system and interfaces with the robot's hardware directly. The SLAMBOT's wi-fi capability enables it to communicate with the cloud server and other agents as necessary. The SLAMBOT is equipped with a *Logitech C250* webcam for measurement (for locating landmarks and ensuring a collision-free motion on the surface being inspected). The ultrasound sensor carried by the robot is a *VS900-RIC VallenSysteme* high sensitivity Acoustic Emission (AE) sensor.<sup>2</sup>

Commented [FD20]: Reference

Commented [FD21]: Reference

Commented [FD22]: Reference

Commented [FD23]: Reference (rather than a Fn) - you can cite their website as the reference

## SLAM

The work presented here has implemented the SLAM algorithm from Thrun et al. [29] with the following modifications. For a landmark located at  $[x_L, y_L]^T$ , and robot pose  $[x, y, \theta]^T$ , the sensor returns the landmark's coordinates with respect to the robot frame. The return  $z = [u, v]^T$  can be written as a function of  $[x, y, \theta, x_L, y_L]^T$  as:

$$z = \begin{bmatrix} u \\ v \end{bmatrix} = h(x, y, \theta, x_L, y_L) = \begin{bmatrix} c\Delta x + s\Delta y \\ -s\Delta x + c\Delta y \end{bmatrix}$$

where  $s = \sin \theta$ ,  $c = \cos \theta$ ,  $\Delta x = x_L - x$ , and  $\Delta y = y_L - y$ .

Then the Jacobian of  $h$  at  $[x, y, \theta, x_L, y_L]^T$  is:

$$\tilde{H}(x, y, \theta, x_L, y_L) = \begin{bmatrix} -c-s & -s\Delta x + c\Delta y & -\Delta x & c & s \\ s & -c & -c\Delta x - s\Delta y & -\Delta y & c \end{bmatrix}$$

According to the SLAM algorithm, the sensed data is considered to be from a new landmark if the likelihood is low that it is from an existing landmark. Let  $\bar{\mu}$  be the mean of the current beliefs. The mean with new landmark locations is  $\mu = [\bar{\mu}_x, \bar{\mu}_y]^T$ , where  $\bar{\mu}_x$  and  $\bar{\mu}_y$  are the unique values such that  $h(\bar{\mu}_x, \bar{\mu}_y, \bar{\theta}, x_L, y_L) = z$ . In our case studied here thus,

$$\begin{bmatrix} \bar{\mu}_x \\ \bar{\mu}_y \end{bmatrix} = \begin{bmatrix} \bar{\mu}_x + \bar{c}u - \bar{s}v \\ \bar{\mu}_y + \bar{s}u + \bar{c}v \end{bmatrix}$$

where  $\bar{c} = \cos \bar{\theta}$  and  $\bar{s} = \sin \bar{\theta}$ .

Commented [FD24]: Make clear what your modifications are.

Commented [FD25]: The original algorithm? Or your modified?

Commented [FD26]: approach?

<sup>2</sup>From their website: "High sensitivity AE-sensor (wide band) with integral preamplifier (34 dB) and calibration bypass. Optimized for applications requiring sensitivity from 100-900 kHz. Able to drive long cables."

Commented [FD27]: Provide their website as a Reference

The update of the covariance matrix is more complicated. Since the new landmark was unobserved before, it is natural to extend the current covariance matrix to

$$\tilde{\Sigma}_{ex} = \begin{bmatrix} \tilde{\Sigma} & \mathbf{0} \\ \mathbf{0} & \gamma I_2 \end{bmatrix}$$

for some large  $\gamma$ .  $\gamma$  is taken to be in  $\infty$  to make computation possible. We use the limit result [is used](#) as  $\gamma$  later in this subsection.

The Bayesian inference [is implemented](#) using the Extended Kalman Filter is given as follows. Let  $Q$  be the covariance of the process noise, and let  $F \in \mathbb{R}^{5 \times (3+2(N+1))}$ , where  $N$  is the number of existing landmarks. All the entries of  $F$  are zeros except the upper  $3 \times 3$  and lower  $2 \times 2$  block matrices which are the identity. Let

$$H = \begin{bmatrix} \tilde{H} & \mathbf{0} \\ \mathbf{0} & I_2 \end{bmatrix} \begin{bmatrix} \tilde{\mu}_x \\ \tilde{\mu}_y \\ x_L \\ y_L \end{bmatrix} F,$$

$$\Psi = H \tilde{\Sigma}_{ex} H^T + Q, K$$

$$= \tilde{\Sigma}_{ex} H^T \Psi^{-1}.$$

Then the new covariance is:

$$\Sigma = (I - KH) \tilde{\Sigma}_{ex},$$

where in the limit case

$$\Sigma = \lim_{\gamma \rightarrow \infty} \Sigma(\gamma) = \begin{bmatrix} \tilde{\Sigma} & A \\ A^T & B \end{bmatrix}$$

with  $A \in \mathbb{R}^{(3+2N) \times 2}$ ,  $A_{i,1} = \sigma_{i,1} - \Delta y \sigma_{i,3}$ , and  $A_{i,2} = \sigma_{i,2} + \Delta x \sigma_{i,3}$ ;  $B \in \mathbb{R}^{2 \times 2}$ ,  $B_{1,1} = c^2 q_{1,1} - 2csq_{1,2} + s^2 q_{2,2} + \sigma_{1,1} + \Delta y^2 \sigma_{3,3} - 2\Delta y \sigma_{3,1}$ , and  $B_{2,2} = s^2 q_{1,1} + 2csq_{1,2} + c^2 q_{2,2} + \sigma_{2,2} + \Delta x^2 \sigma_{3,3} + 2\Delta x \sigma_{3,2}$ , and  $B_{1,2} = B_{2,1} = c^2 q_{1,2} + csq_{1,1} - csq_{2,2} - s^2 q_{1,2} + \sigma_{1,2} + \Delta x \sigma_{1,3} - \Delta y \sigma_{2,3} - \Delta x \Delta y \sigma_{3,3}$  where  $Q = (q_{i,j})$  and  $\tilde{\Sigma} = (\sigma_{i,j})$ .

#### 4. Ultrasound RangeSensor

Much work has been done on the theory and application of Lamb waves to structural health monitoring (see [1, 2, 3, 5, 6, 7, 9, 10, 11, 12, 13, 17, 18, 19, 21, 22, 30, 33]). [We make use of these methods are used in our work presented here](#). Given a received signal  $f$  and a time interval  $(t_0, t_1)$ , the range finder estimates the arrival time of maximum energy delivery that is defined by the CWT (Continuous Wavelet Transform) based scaled-average wavelet power (SAP) (see [28], [p. 166 for a description of this method](#)) in  $(t_0, t_1)$ . Define a function  $peek: C^2(\mathbb{R}) \times \mathbb{R}^2 \rightarrow \mathbb{R}$  such that

$$peek(f, t_0, t_1) = \arg \max_{t \in (t_0, t_1)} sap(f)(t).$$

The  $peek$  function returns a  $t$  such that the SAP of signal  $f$  is maximized in  $(t_0, t_1)$ . Then the [range-range-finder](#) is defined by

$$d \leftarrow \arg \max |peek(f, t_0, t_1) - peek(sig(d), -\infty, \infty)|,$$

**Commented [FD28]:** Summarize there the modifications you made to the Thurn/SLAM algorithm, and the benefits/advantages.

**Commented [FD29]:** What is the benefit from providing so many references? Are you using all of them?

**Commented [FD30]:** Which specifically – name at least the most important/relevant.

where  $sig(d)$  is the signal that should be received at distance  $d$  away from the actuator in the homogeneous plate. In ~~our~~ [the simulations performed here](#), we ~~model~~ the wave propagation [is modeled](#) by the 2D Helmholtz Equation

$$\Delta u + k^2 u = g,$$

where  $g$  is the actuation signal and  $u$  is the wave function, and Sommerfeld radiation condition

$$\lim_{|x| \rightarrow \infty} \sqrt{|x|} (\nabla u - iku) = 0,$$

uniformly for all  $n = 1$ . If the actuator is located at  $x_s$  and emits a signal  $g$ , the solution of  $u$  is that

$$u(x_r, t) = \frac{1}{2\pi} \int_{-\infty}^{\infty} d\omega \hat{g}(\omega) G(x, x_s, \omega) e^{-i\omega t},$$

$$G(x, y, \omega) = \frac{i}{4} H_0^{(1)}(k|x-y|),$$

where  $H$  is the Haenkel function, and  $k$  is the wave number that is a function of  $\omega$  in dispersive materials. For a thin plate,  $k$  can be approximated by the Lamb Wave approximation (see [31]). ~~Our~~ [The sig](#) function is defined as

$$sig(d)(t) = u(x_r, t)$$

for all  $|x_r - x_s| = d$

Figure 3 shows the ultrasound range sensor principle. An ultrasound signal is transmitted by the emitter, and the receiver gets the directly propagated signal from emitter to [the](#) receiver, followed by any signals reflected from features in the material (e.g., damage locations, edges, etc.). Thus, the time of arrival (TOA) of the reflected signal

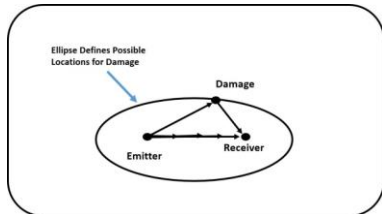


Figure 3: Damage Detection with Ultrasound Network.

allows the calculation of the distance traveled by that signal, ~~and this~~ [which](#) means that the feature causing the reflection is located somewhere on an ellipse around the emitter-receiver pair.

~~The following discussion follows source exposition~~ [ensues from the work by the authors in \[16\]](#). Several measurements are needed to get the best location estimate for a feature; [from which](#) these range values are collected by having the robot place the actuator and receiver at different locations, and the location is constrained by the corresponding ellipse. Thus, by using an accumulator array and adding a 'vote' to each location on the ellipse, these six sensed range

**Commented [FD31]:** How does this connect to the previous paragraph or to this Section?

**Commented [FD32]:** Describe in a sentence or 2 what is the work in [16] and its importance/relevance, so that the reader of this Chapter can follow your train of thought.

values allow the determination of the most likely location of the reflecting point (damage in this case). This 'voting' is done with a Gaussian spread which leads to a smooth accumulator surface.

Observed and simulated reflected A0 mode signals with known minimized possible reflection range are shown in Figure 4. There is significant overlap between the directly propagated and simulated reflected signals. This overlap necessitates a method to separate reflected versus directly propagated waves in the observed data. In addition, we would like one needs to isolate the main component of the reflected signal in the data. To achieve this signal isolation, the signals outside a certain reflection range are eliminated. Figure 5

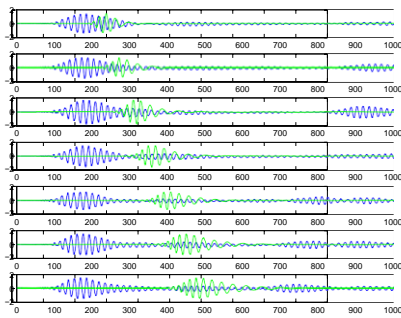


Figure 4: First Step in DSR Sensor comparing Actual Data with Simulated Signal.

shows the windowed signals versus the simulated signals as described above. In this form, the peak amplitude is not clearly identifiable. We therefore, the system needs to compute the CWT based scaled-average wavelet power (SAP), (see [28], referenced above page 166, for a description of this method). The computed SAPs are shown in Figure 6; as can be seen in this figure Figure 6, the peaks are more clearly discernible.

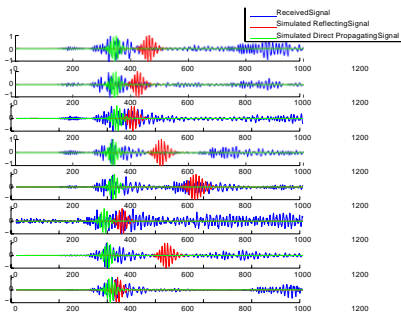


Figure 5: Windowed SAP Signal versus Simulated Signal.



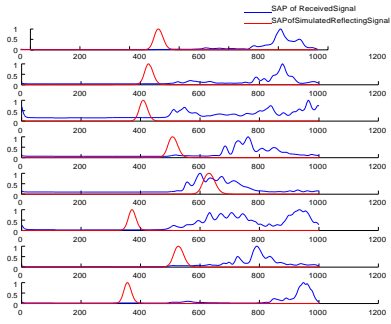


Figure 6: Computer Scaled-Average Wavelet Power (SAPs).

### 5. Data Routing Model for Distributed Cloud Computing

The SLAMBOT system includes a highly customizable data sharing model between sensing and computing resources. The data sharing model enables multiple sensing nodes to open connections with computing resources and retrieve results. As can be seen above, the system gains its advantages from the three main components: (1) sensor nodes, (2) router, and (3) processor nodes. These are discussed later in this Section. The presence of multiple processor and broker nodes reduces the chance of failure. The RabbitMQ message broker service provides reliable, flexible, highly available and multi-protocol communication system; it also provides the ability to handle multiple protocols and supports message tracing. Figure 7 shows the current implementation layout of the cloud architecture. As can be seen above, the

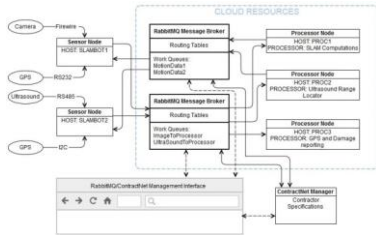


Figure 7: Cloud Component Architecture for Small-scale Health Structure Monitoring.

system gains its advantages from the five main components: (1) sensor nodes, (2) router, and (3) processor nodes. A data routing model as customizable as this enables failsafe and quick communication between resources while providing isolation between sensing and computing resources. The dynamic queuing eases development and scalability.

**Sensor Nodes** The sensors on the individual devices communicate with network connected sensor nodes which in this case are physical SLAMBOTS. This communication can be over the preferred sensor protocol. For example, GPS sensors can exchange data over I2Cor RS-232(serial) interconnects with the nodes. The sensor nodes are applications running on host devices that have the capability of posting messages onto the RabbitMQ message broker queues. The sensor nodes gather sensor data, serialize it and put them onto the relevant work queues. Thus, they the sensor nodes are unaware of the computing resources on the cloud. Any processor capable of handling the work posted on the relevant work queue can pick it up. Also, the node only needs to subscribe to the work queue that is relevant to it.

**RabbitMQ Message Brokers** This RabbitMQ is a highly reliable message broker that has several built-in features. This has allowed us to create implementing of the DDDAS framework presented in this Chapter. The systems is a fault tolerant allowing, persistent messaging system between processes running on disparate devices. Work-Work queues can be spawned by remote applications dynamically. This allows allowing creation of a highly configurable easy to use messaging system. The messages comprise contains routing tables containing providing routing information regarding the available processing and sensing nodes.

**Commented [FD33]:** You list 3 here not five. Below you list 5: sensor Nodes; message broker, ContractNet Manager, Interface, and processor nodes. So correct the text appropriately.

**Formatted:** Font: 10 pt, Bold

**Formatted:** Font: 10 pt, Bold

**Formatted:** Font: 10 pt, Not Bold

**Commented [FD34]:** Provide Reference

**Commented [FD35]:** Some fonts are too small. Enlarge Figure.

**Contract Net Manager** This agent arbitrates allocation of work ~~awards assignment assignments~~ to sensor node agents that bid on a task. ~~It~~ ~~The manager agent~~ accepts tasks provided by the user and ~~sets sets-~~up contracts. It has knowledge of contractor capabilities ~~that-which~~ it uses in making this decision.

**RabbitMQ/Contract Net Management Interface** A web interface to a service running on the message broker and contract manager allows ~~us-to~~ monitoring the messaging activity. ~~This which~~ helps in not only debugging the system ~~developed here~~ but also in managing a large environment. ~~This-The web~~ interface allows manually declaring queues, sending and receiving messages and monitor connections.

**Processor Nodes** ~~This-The processor~~ applications runs on a remote ~~maehine computer platform~~ that has ~~an-good- adequate~~ computing capability. ~~This-The~~ applications generally handles singular responsibilities but can also be used to consolidate data from multiple sensors and ~~take-derive~~ a decision based upon the multiple data points.

## 6. Validation Experiments

Figure 9 shows the experimental layout for ~~our-the~~ testing scenario ~~for-the methods-presented-heretof the SLAMBOT system~~. The aluminum panel is 121.92cm<sup>2</sup>, and 1.6 mm thick, the sensors were *VS900-RIC* Vallen transducers, and the excitation signal was a 200 KHz 5 cycle, Hann-windowed waveform. Figure 8 shows a trace of a sample SLAM run; as can be seen, the localization results are good for the robot and for nearby landmarks. However, more distant landmarks are poorly localized due to the failure of the underlying assumptions. ~~We-are~~ ~~Future planned work can~~ planning ~~includesand~~ performing a multi-robot SLAM with another tracked robot on the surface and a quadrotor hovering above the plate. ~~Figure 10 shows ellipses produced by reflections from the boundary~~. Figure 11 shows the range ellipses derived from ultrasound signals reflected from a large hole. As can be seen, the intersection of the signals localizes the damage in the structure (in this case a hole in an aluminum plate). ~~Figure 10 shows ellipses produced by reflections from the boundary~~.

## 7. Conclusions and Future Work

**Commented [FD36]:** Provide Reference, if different than RabbitMQ

**Commented [FD37]:** What does this mean? Provide an illustrative example.

**Commented [FD38]:** State what connections (Provide an illustrative example)

**Commented [FD39]:** State whether is a mid-range, high-performance, etc, and whether it needs to be dedicated or on the cloud – the cloud is the likely I think. In any case calrify.

**Commented [FD40]:** What's meant by singular responsibilities?

**Commented [FD41]:** Give an illustrative example of such a decision.

**Commented [FD42]:** You need to phrase this accordingly, since this is what you said in 2015. It will be good to briefly state here subsequent (perhaps still on-going work) on the multi-robot SLAM... Also provide subsequent references

**Formatted:** Font: 10 pt, Highlight

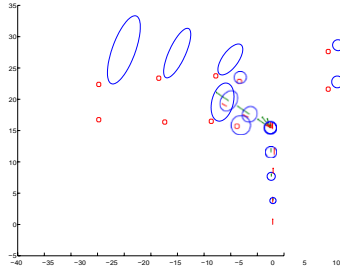


Figure 8: Results from a SLAM run.

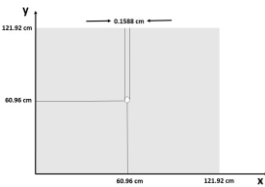


Figure 9: Experimental Layout for Damage Localization using the Lamb Wave Range Sensor in an Aluminum Plate.

The work described in this Chapter is on the development of a cloud-based architecture which supports multiple agents working together to provide a structural health monitoring capability on a small-scale materials structure, which supports DDDAS-based methods. This system developed here includes not only agents who contract for monitoring service and those that deliver it, but also agents that analyze the data delivered by the monitoring robot (e.g., here this includes both camera and ultrasound data; the Lamb wave based range finder function is performed by an off-line agent in Matlab and that information can be exploited by the mobile robot running Python). The combination of Lamb wave damage analysis with a robot SLAM methodology allows for more autonomous and accurate mapping of damage in structures.

Subsequent to the work presented here, a number of ~~investigating the following~~ aspects of the system ~~are~~ ~~have~~ been investigated:

- More precise mathematical characterization of the uncertainty in the results. While the covariance matrix of the EKF SLAM method gives some insight into the uncertainty, ~~we-it's~~ ~~believe~~/~~conjectured~~ that this can be further constrained by using multiple robots, and a better understanding of the Lamb wave uncertainties.
- The system is being extended to include multiple robots in order to reduce the uncertainty in the ~~the~~ localization results. Moreover, ~~it's seen as useful to we are looking to explore the~~ use other bases for the SLAM technique itself; e.g., Lamb wave reflection patterns at individual locations (e.g., similar to visual SLAM based on the appearance of the surface), as well as other robots to locate the ultrasound sensors on the surface.
- ~~We also are looking at~~ Also, extending the system to inspecting composite materials ~~is a useful direction, given the increasing ubiquity of composites in airframe structures, and thus-~~

Commented [FD43]: Enlarge figure so features are clearly visible  
Move figure following the paragraph it's cited

Commented [FD44]: Some fonts are too small to be legible. Enlarge Figure  
And Move figure following the paragraph it's cited

Commented [FD45]: Or are still in progress? Phrase accordingly, and if there are additional references, please include/cite.

Commented [FD46]: Again, if this now has been done or is being done, phrase accordingly and provide References if any.

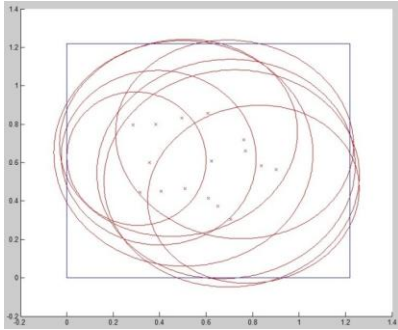


Figure 10: Range Data from the Boundary.

This will be especially important for aircraft monitoring.

Commented [FD47]: Move this figure following the paragraph it's cited

## 8. Summary

The methods presented here are applicable to a wide variety of disciplines and applications. The Computational Sensor Network framework provides not only a means for scientists and engineers to develop systems which self-calibrate their models, but also supports the deployment of autonomous systems which can verify and validate their own computational components and physics models.

Three main DDDAS concepts have been used in this work:

- *advances in mathematics and statistical algorithms*: methods have been developed to exploit Lamb waves in the detection and localization of structural defects, and an uncertainty characterization is provided for the results of the analysis.
- *applications modeling*: an overall cloud computing and storage architecture is provided which enables heterogeneous computational agents to contribute to solving the specific application problem in a coherent way, and
- *application measurement systems and methods*: validation experiments conducted using aluminum plates are presented which involve the detection of defects by a custom mobile robot using onboard ultrasound sensors.

These results demonstrate the feasibility of using Computational Sensor Networks in a wide variety of applications, including structural health monitoring, large-scale outdoor surveying (e.g., open mines), nuclear facility inspection, etc. Moreover, the cloud-based computational framework has been extended and demonstrated in a geospatial analysis system, *BRECCIA*, to support rational decision making based on the fusion of multi-source information (from humans, simulations, sensors, etc.). ~~The goal in this case is to~~The general framework supports (1) the use of both discrete logical processes and continuous models, (2) the ability to simulate courses of action that

Commented [FD48]: This needs to be rephrased according to the comments provided in the beginning of the chapter

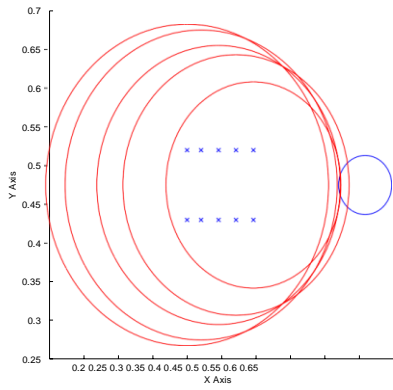


Figure 11: Range Finder Ellipses to Damage (from 5 locations).

take into account real-time data, and (3) the ability to automatically and continuously plan new optimal data acquisition strategies.

**Acknowledgments** This work was supported by AFOSR-FA9550-12-1-0291. We like to acknowledge project members (John Mathews, Dan Adams, and Edward Grant) for their input on this and related material.

**Commented [FD49]:** Enlarge a bit the figure and move it following the paragraph where it's cited.



## Bibliography

- [1] A.P. Albert, E. Antoniou, S.D. Leggiero, K.A. Tooman, and R.L. Veglio. A Systems Engineering Approach to Integrated Structural Health Monitoring for Aging Aircraft. Master's thesis, Air Force Institute of Technology, Ohio, March 2006.
- [2] J.P. Andrews. Lamb Wave Propagation in Varying Thermal Environments. Master's thesis, Air Force Institute of Technology, Ohio, March 2007.
- [3] M. Barker, J. Schroeder, and F. Gürbüz. Assessing Structural Health Monitoring Alternatives using a Value-Focused Thinking Model. Master's thesis, Air Force Institute of Technology, Ohio, March 2009.
- [4] B. Liu, Y. Chen, A. Hadiks, E. Blasch, A. Aved, D. Shen, and G. Chen. Information Fusion in a Cloud Computing Era: A Systems-Level Perspective. *IEEE Aerospace and Electronic Systems Magazine*, 29(10):16–24, October 2014.
- [5] M.S. Bond, J. A. Rodriguez, and H.T. Nguyen. A Systems Engineering Process for an Integrated Structural Health Monitoring System. Master's thesis, Air Force Institute of Technology, Ohio, March 2007.
- [6] J.S. Crider. Damage Detection using Lamb Waves for Structural Health Monitoring. Master's thesis, Air Force Institute of Technology, Ohio, March 2007.
- [7] Q.-T. Deng and Z.-C. Yang. Scattering of  $S_0$  Lamb Mode in Plate with Multiple Damage. *Journal of Applied Mathematical Modeling*, 35:550–562, 2011.
- [8] C.C. Douglas and A. Patra. AFOSR/NSF Workshop on Dynamic Data Driven Application systems. Unpublished report, October 2011.
- [9] V. Giurgiutiu. Tuned Lamb Wave Excitation and Detection with Piezoelectric Wafer Active Sensors for Structural Health Monitoring. *Journal of Intelligent Material Systems and Structures*, 16(4):291–305, April 2005.
- [10] S. Ha and F.-K. Chang. Optimizing a Spectral Element for Modeling PZT-induced Lamb Wave Propagation in Thin Plates. *Smart Mater. Struct.*, 19(1):1–11, 2010.
- [11] S. Ha, A. Mittal, K. Lonkar, and F.-K. Chang. Adhesive Layer Effects on Temperature-sensitive Lamb Waves Induced by Surface Mounted PZT Actuators. In *Proceedings of 7th International Workshop on Structural Health Monitoring*, pages 2221–2233, Stanford, CA, September 2009.



- [12] S.J. Han. Finite Element Analysis of Lamb Waves acting within a Thin Aluminum Plate. Master's thesis, Air Force Institute of Technology, Ohio, September 2007.
- [13] J.B. Harley and J.M.F. Moura. Sparse Recovery of the Multimodal and Dispersive Characteristics of Lamb Waves. *Journal of Acoustic Society of America*, 133(5):2732–2745, May 2013.
- [14] T.C. Henderson. *Computational Sensor Networks*. Springer-Verlag, Berlin, Germany, 2009.
- [15] T.C. Henderson, C. Sikorski, E. Grant, and K. Luthy. Computational Sensor Networks. In *Proceedings of the 2007 IEEE/RSJ International Conference on Intelligent Robots and Systems (IROS 2007)*, San Diego, USA, 2007.
- [16] Thomas C. Henderson, Kyle Luthy, and Edward Grant. Reaction-Diffusion Computation in Wireless Sensor Networks. *Journal of Unconventional Computing*, page to appear, 2014.
- [17] B.C. Lee and W.J. Staszewski. Modelling of Lamb Waves for Damage Detection in Metallic Structures: Part I. Wave Propagation. *Smart Mater. Struct.*, 12(5):804–814, October 2003.
- [18] B. C. Lee and W. J. Staszewski. Lamb Wave Propagation Modelling for Damage Detection: I. Two-dimensional Analysis. *Smart Mater. Struct.*, 16(5):249–259, 2007.
- [19] E. Lindgren, J.C. Aldrin, K. Jata, B. Scholes, and J. Knopp. Ultrasonic Plate Waves for Fatigue Crack Detection in Multi-Layered Metallic Structures. Technical Report AFRL-RX-WP-TP-2008-4044, Air Force Research Laboratory, December 2008.
- [20] W.L. Oberkampf and C.J. Roy. *Verification and Validation in Scientific Computing*. Cambridge University Press, Cambridge, UK, 2010.
- [21] F. Ospina. An Enhanced Fuselage Ultrasound Inspection Approach for ISHM Purposes. Master's thesis, Air Force Institute of Technology, Ohio, March 2012.
- [22] J. L. Rose. *Ultrasound Waves in Solid Media*. Cambridge University Press, Cambridge, UK, 1999.
- [23] David Sachamy, Thomas C. Henderson, Amar Mitiche, Robert Simmons, Taylor Welker, and Xiuyi Fan. BRECCIA: A Multi-Agent Data Fusion and Decision Support System for Dynamic Mission Planning. In *Proceedings of the 2nd Conference on Dynamic Data Driven Application Systems (DDDAS 2017)*, Cambridge, MA, August 2017.
- [24] David Sachamy, Thomas C. Henderson, Amar Mitiche, Robert Simmons, Taylor Welker, and Xiuyi Fan. BRECCIA: A Novel Multi-source Fusion Framework for Dynamic Geospatial Data Analysis. In *IEEE Conference on Multisensor Fusion and Integration*, Daegu, South Korea, November 2017.
- [25] David Sachamy, Thomas C. Henderson, Amar Mitiche, Robert Simmons, Taylor Welker, and Xiuyi Fan. BRECCIA: Unified Probabilistic Dynamic Geospatial Intelligence. In *IEEE Conference on Intelligent Robots and Systems (IROS 2017 Late Breaking Paper)*, Vancouver, CA, September 2017.

- [26] F. Sawo, F. Beutler, and U.D. Hanebeck. Decentralized Reconstruction of Physical Phenomena based on Covariance Bounds. In *Proceedings of the 17th IFAC World Congress (IFAC 2008)*, Seoul, Republic of Korea, July 2008.
- [27] R.G. Smith. The Contract Net Protocol: High-Level Communication and Control in a Distributed Problem Solver. *IEEE-T Computers*, C-29:1104–1113, December 1980.
- [28] Z. Su and L. Ye. *Identification of Damage using Lamb Waves*. Springer Verlag, Berlin, Germany, 2009.
- [29] S. Thrun, W. Burgard, and D. Fox. *Probabilistic Robotics*. MIT Press, Cambridge, MA, 2005.
- [30] R.T. Underwood. Damage Detection Analysis Using Lamb Waves in Restricted Geometry for Aerospace Applications. Master's thesis, Air Force Institute of Technology, Ohio, March 2008.
- [31] W. Wang. *Imaging in a Homogeneous Aluminum Plate using Ultrasonic Waves*, Honors Thesis, University of Utah. Undergraduate thesis, University of Utah, December 2014.
- [32] W. Wang, T.C. Henderson, A. Joshi, and E. Grant. SLAMBOT: Structural Health Monitoring using Lamb Waves. In *Proceedings of the 2014 IEEE International Conference on Multisensor Fusion and Integration for Intelligent Systems (MFI 2014)*, Beijing, China, September 2014.
- [33] Y. Ying, Jr. J.H. Garrett, J. Harley, I.J. Oppenheim, J. Shi, and L. Soibelman. Damage Detection in Pipes under Changing Environmental Conditions using Embedded Piezoelectric Transducers and Pattern Recognition Techniques. *Jnl of Pipeline Systems Engineering and Practice*, 4:17–23, 2013.