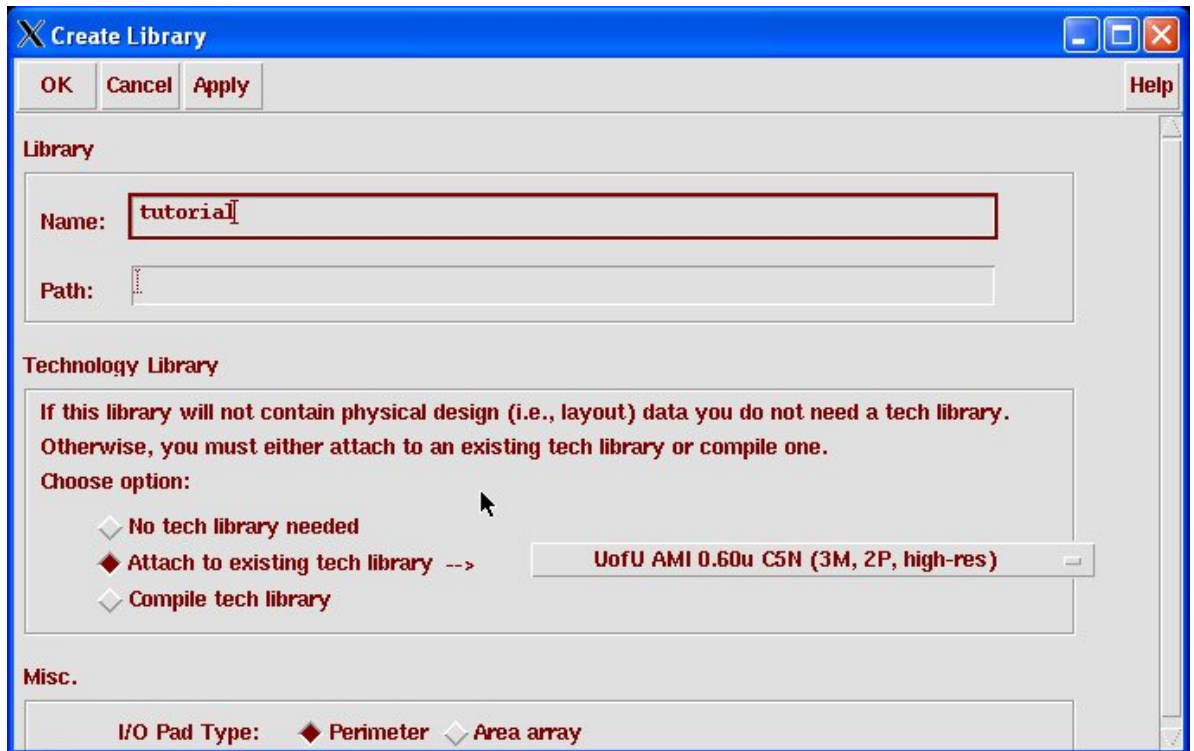


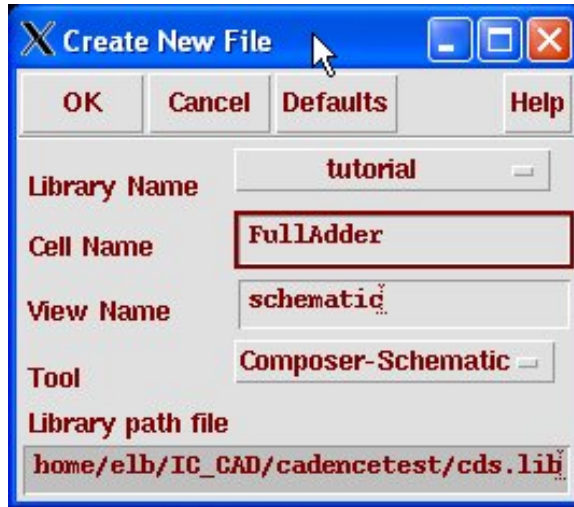
Chapter 3

Composer Schematic Capture



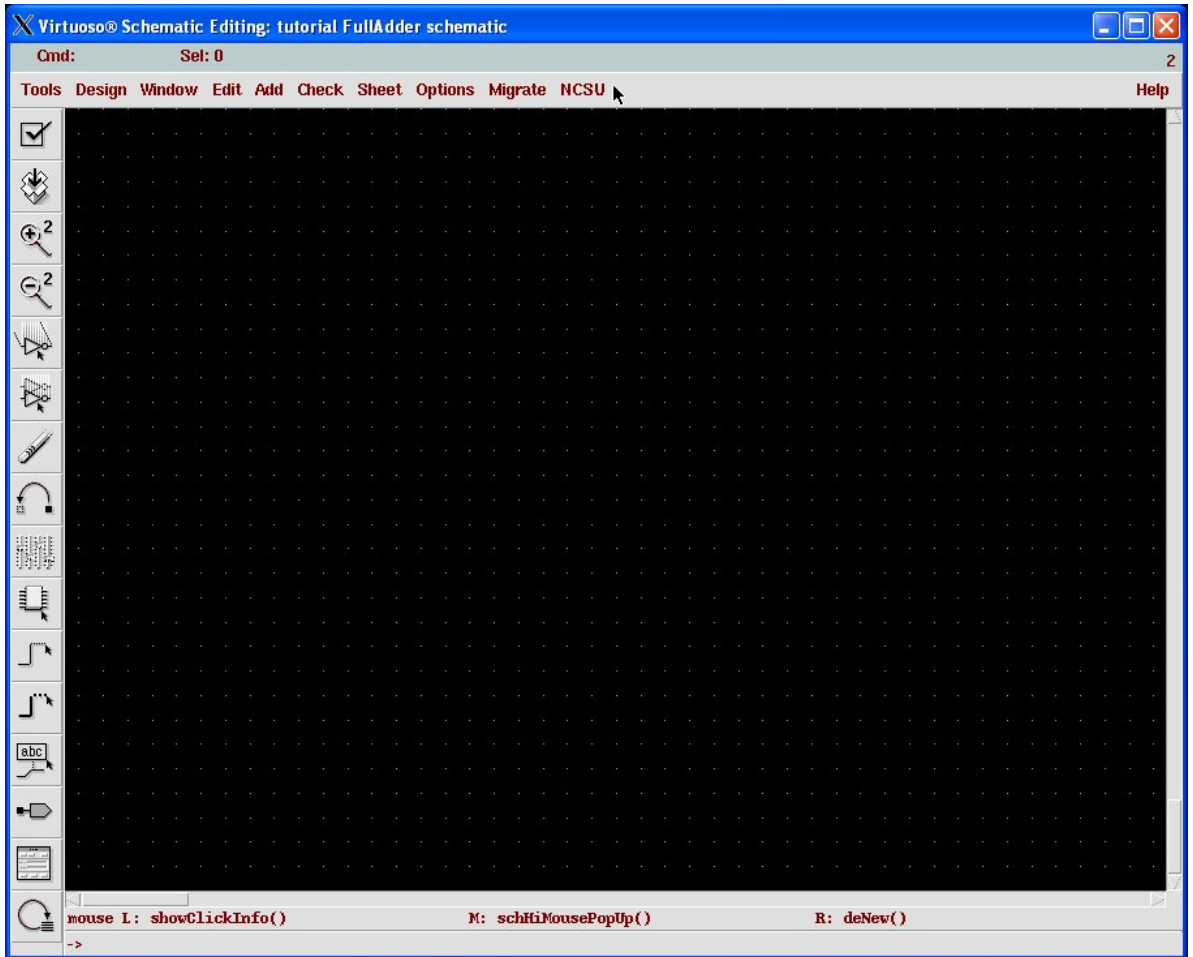
(Copyright © 2005, 2010, Cadence Design Systems, Inc. All rights reserved worldwide. Reprinted with permission.)

Figure 3.1: Library creation dialog box in the **Library Manager**



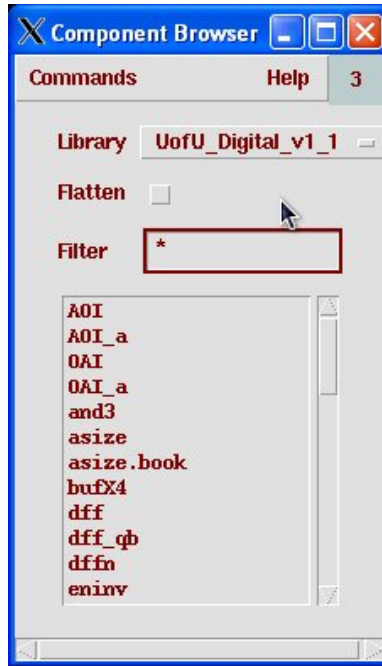
(Copyright ©2005, 2010, Cadence Design Systems, Inc. All rights reserved worldwide. Reprinted with permission.)

Figure 3.2: New cell dialog box in the **Library Manager**



(Copyright © 2005, 2010, Cadence Design Systems, Inc. All rights reserved worldwide. Reprinted with permission.)

Figure 3.3: Blank Composer window; note the command widgets on the left of the screen



(Copyright ©2005, 2010, Cadence Design Systems, Inc. All rights reserved worldwide. Reprinted with permission.)

Figure 3.4: Component Browser dialog

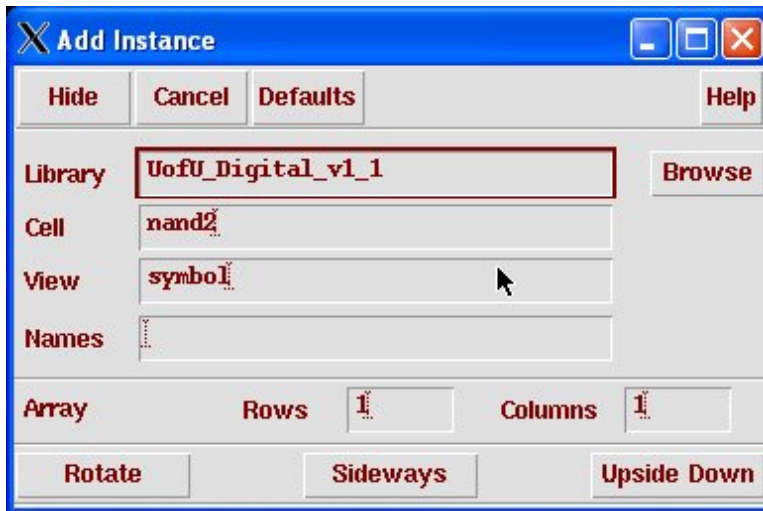


Figure 3.5: Add Instance dialog box

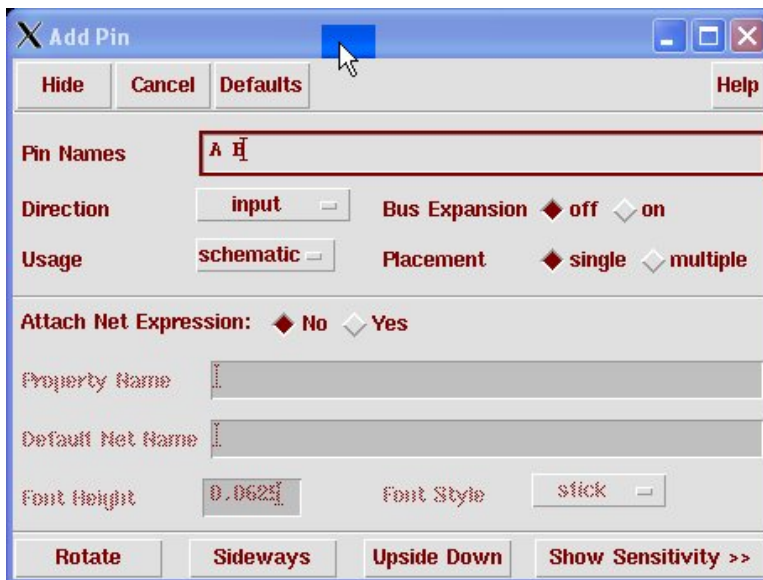
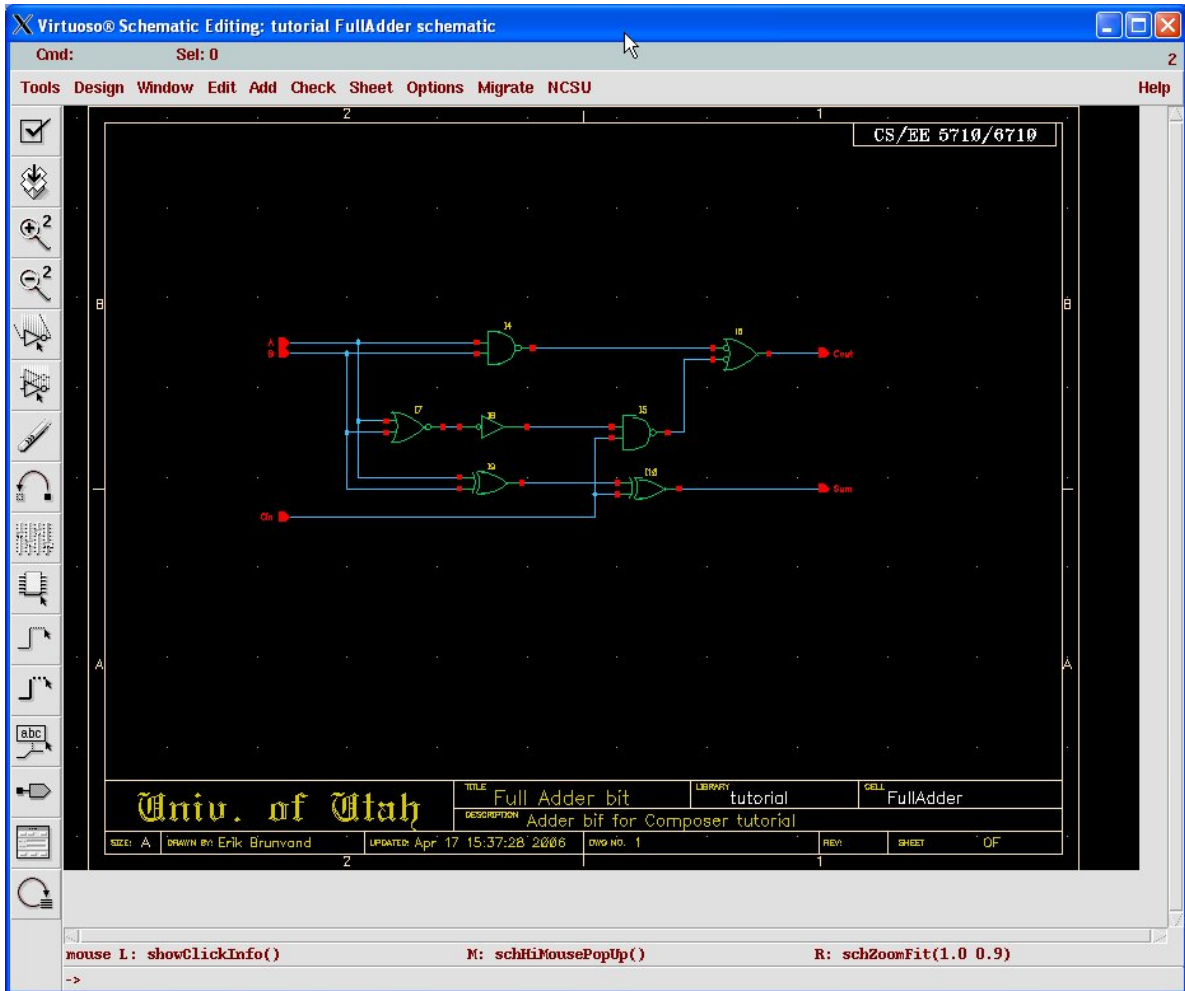


Figure 3.6: Add Pin dialog box



(Copyright © 2005, 2010, Cadence Design Systems, Inc. All rights reserved worldwide. Reprinted with permission.)

Figure 3.7: A full adder bit schematic



Figure 3.8: A simple symbol for the FullAdder circuit

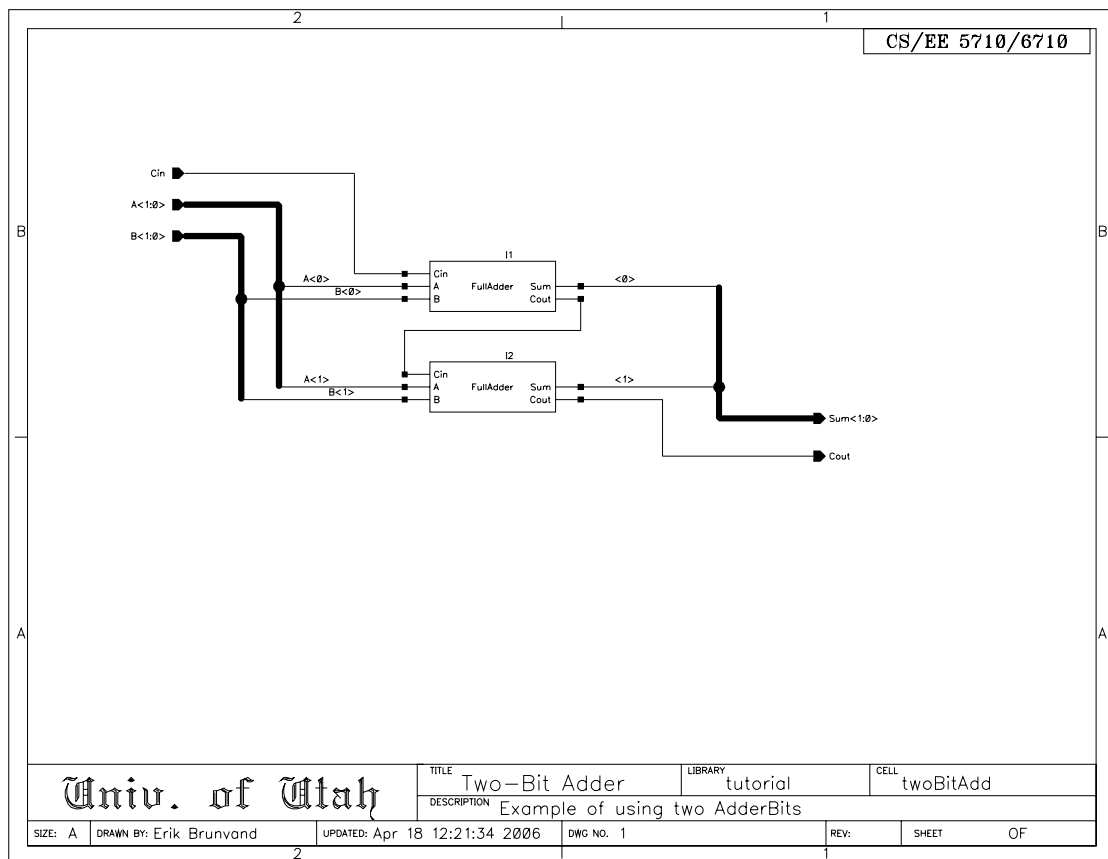
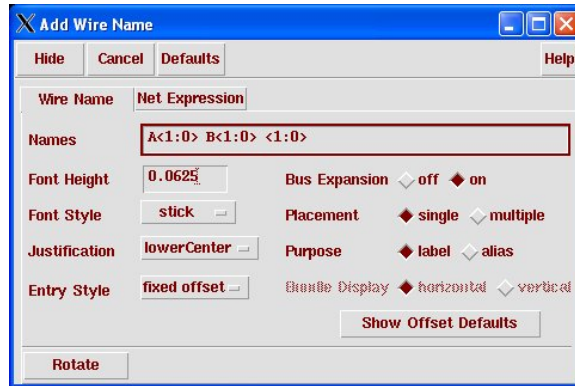


Figure 3.9: A two-bit adder using FullAdder bits



(Copyright ©2005, 2010, Cadence Design Systems, Inc. All rights reserved worldwide. Reprinted with permission.)

Figure 3.10: The Wire Name dialog box

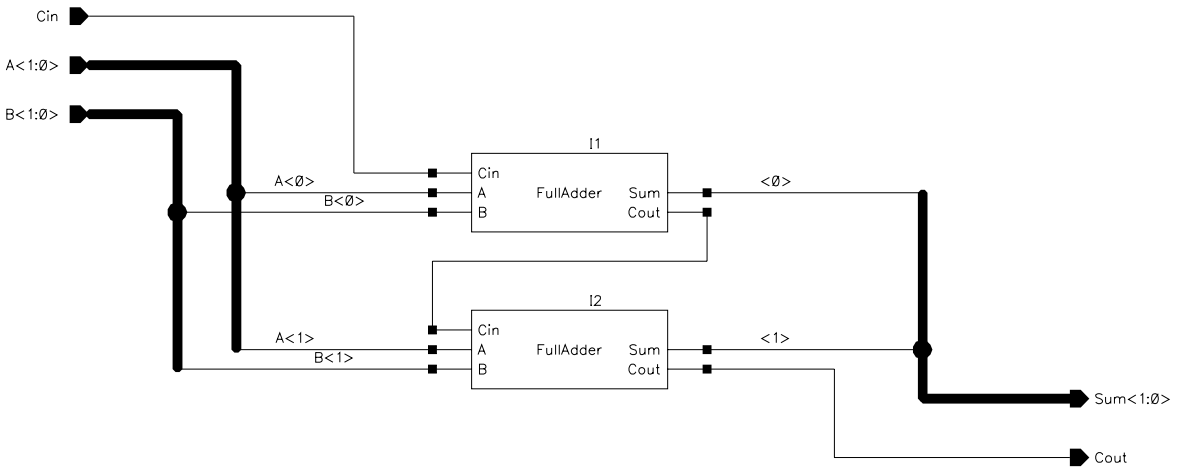


Figure 3.11: Close view of the twoBitAdd showing the bus naming

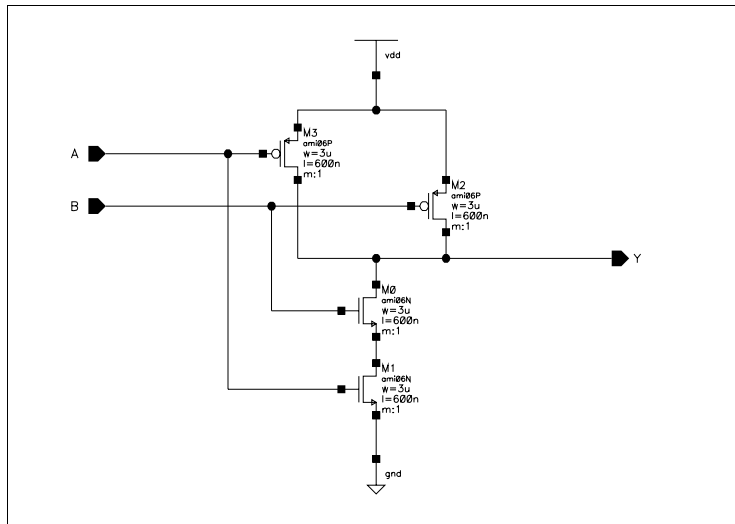
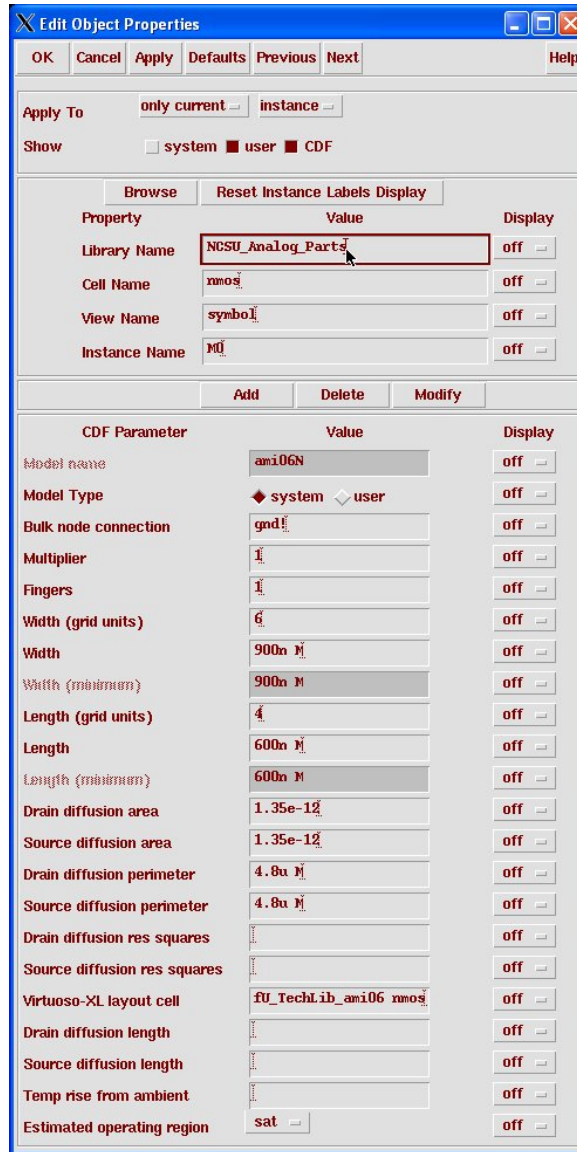


Figure 3.12: Transistor schematic for a two-input NAND gate



(Copyright ©2005, 2010, Cadence Design Systems, Inc. All rights reserved worldwide. Reprinted with permission.)

Figure 3.13: Device properties for an nmos device

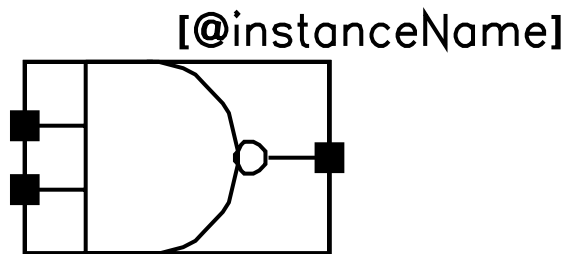
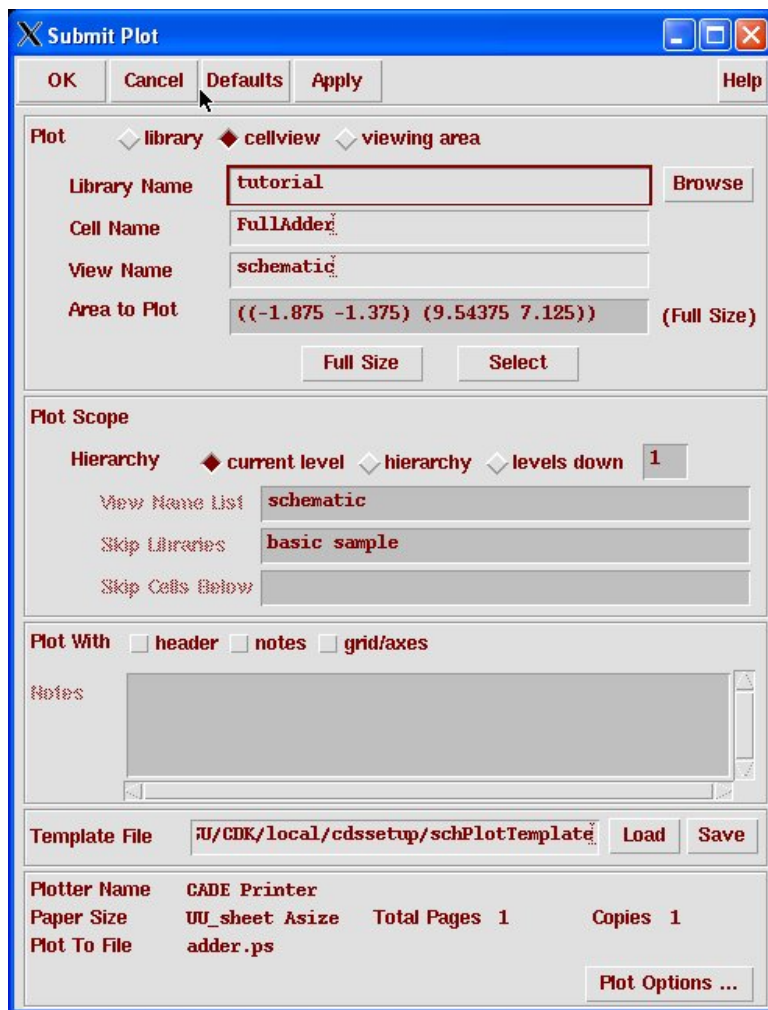
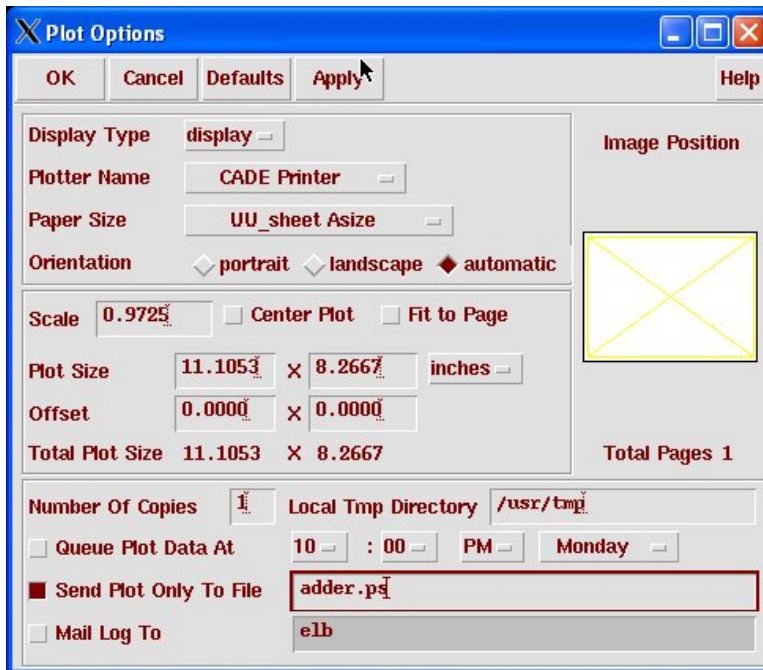


Figure 3.14: A symbol for the nand2 circuit



(Copyright ©2005, 2010, Cadence Design Systems, Inc. All rights reserved worldwide. Reprinted with permission.)

Figure 3.15: Dialog box for Submit Plot



(Copyright ©2005, 2010, Cadence Design Systems, Inc. All rights reserved worldwide. Reprinted with permission.)

Figure 3.16: Dialog box for Plot Options

