

Chapter **10**

Abstract Generation

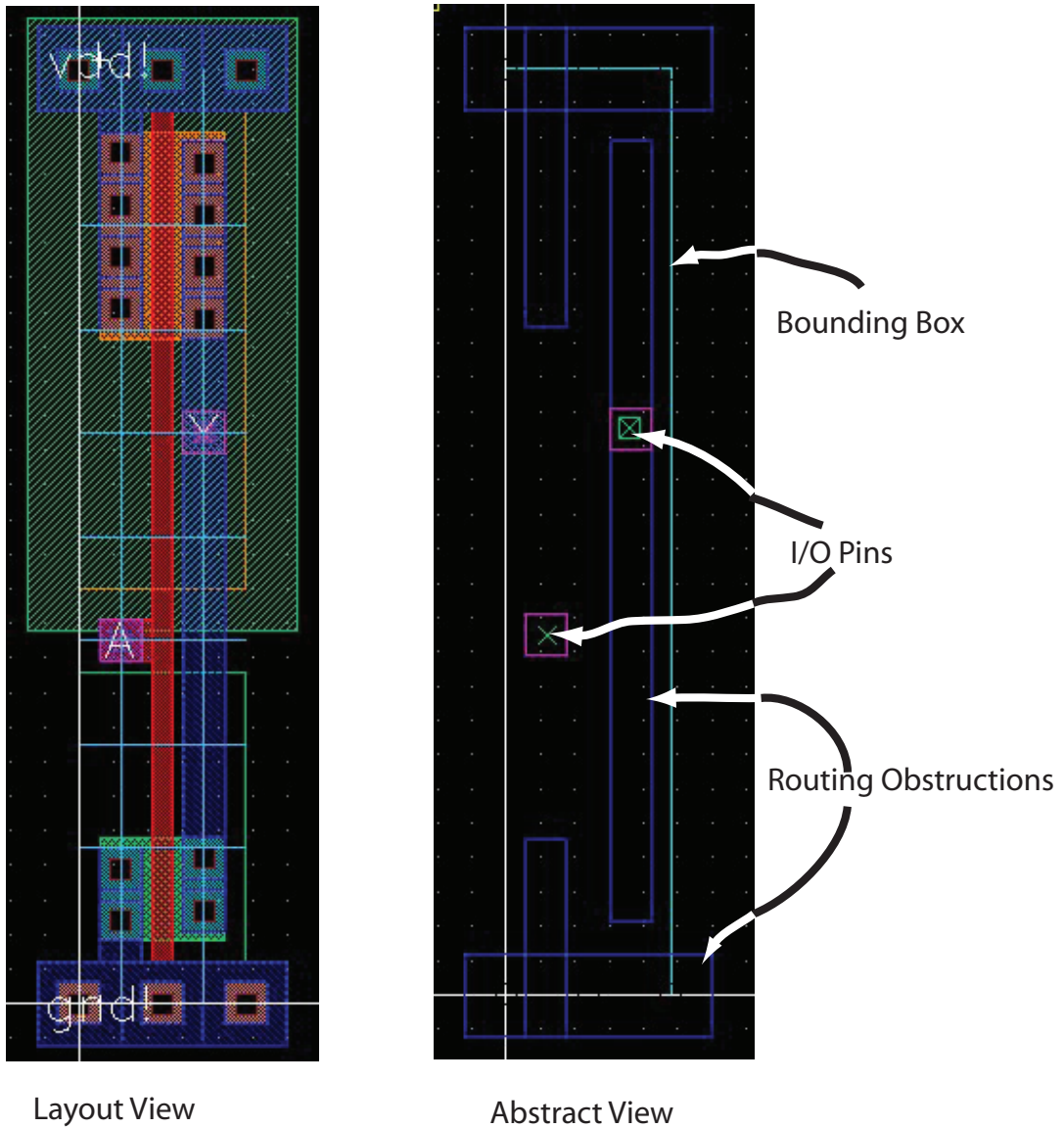
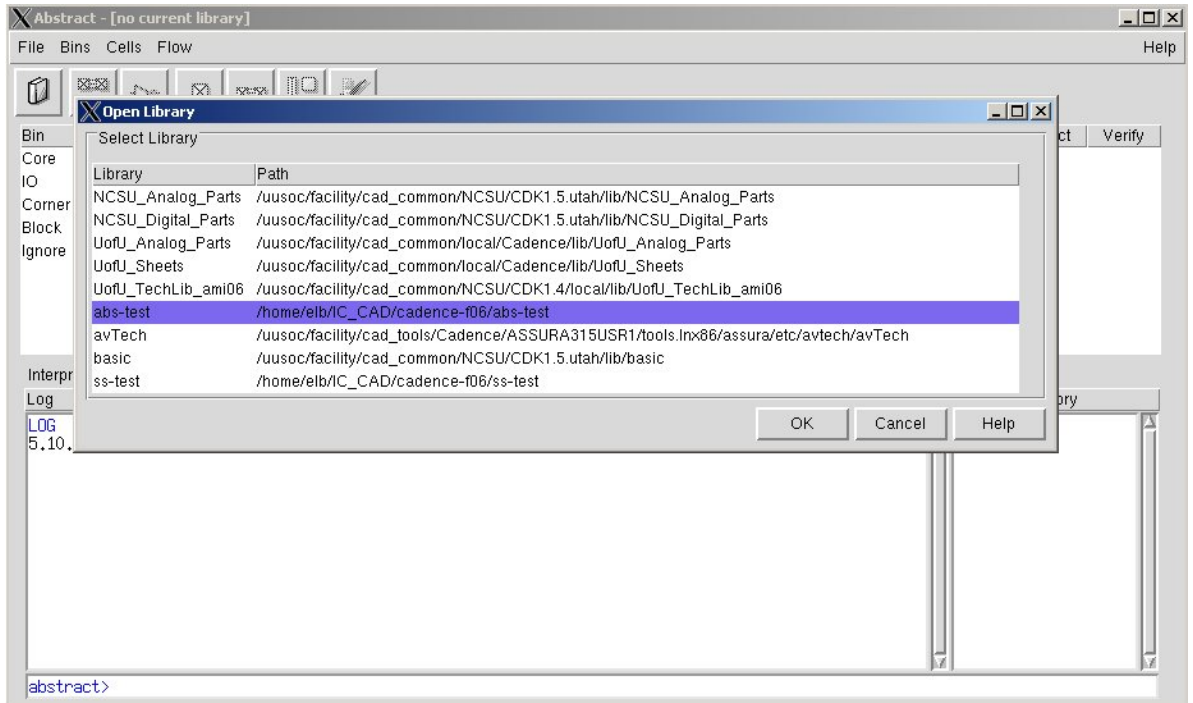
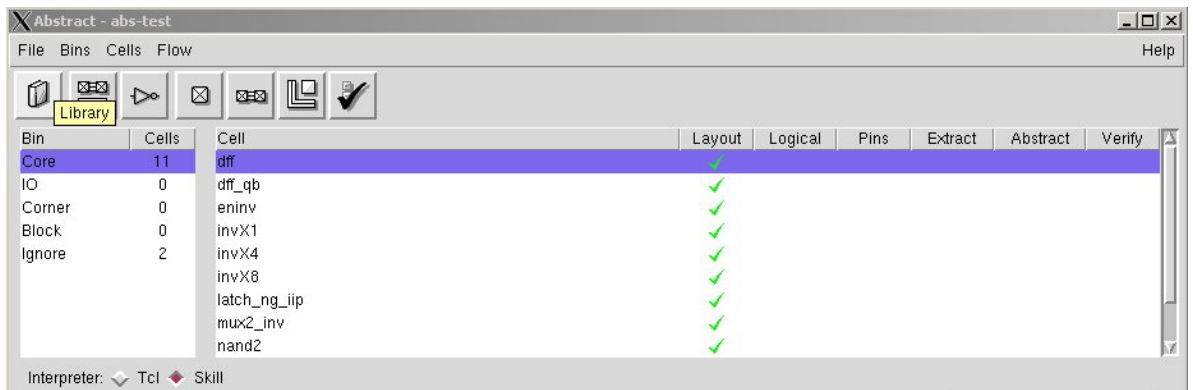


Figure 10.1: Side by side layout and abstract views of an inverter



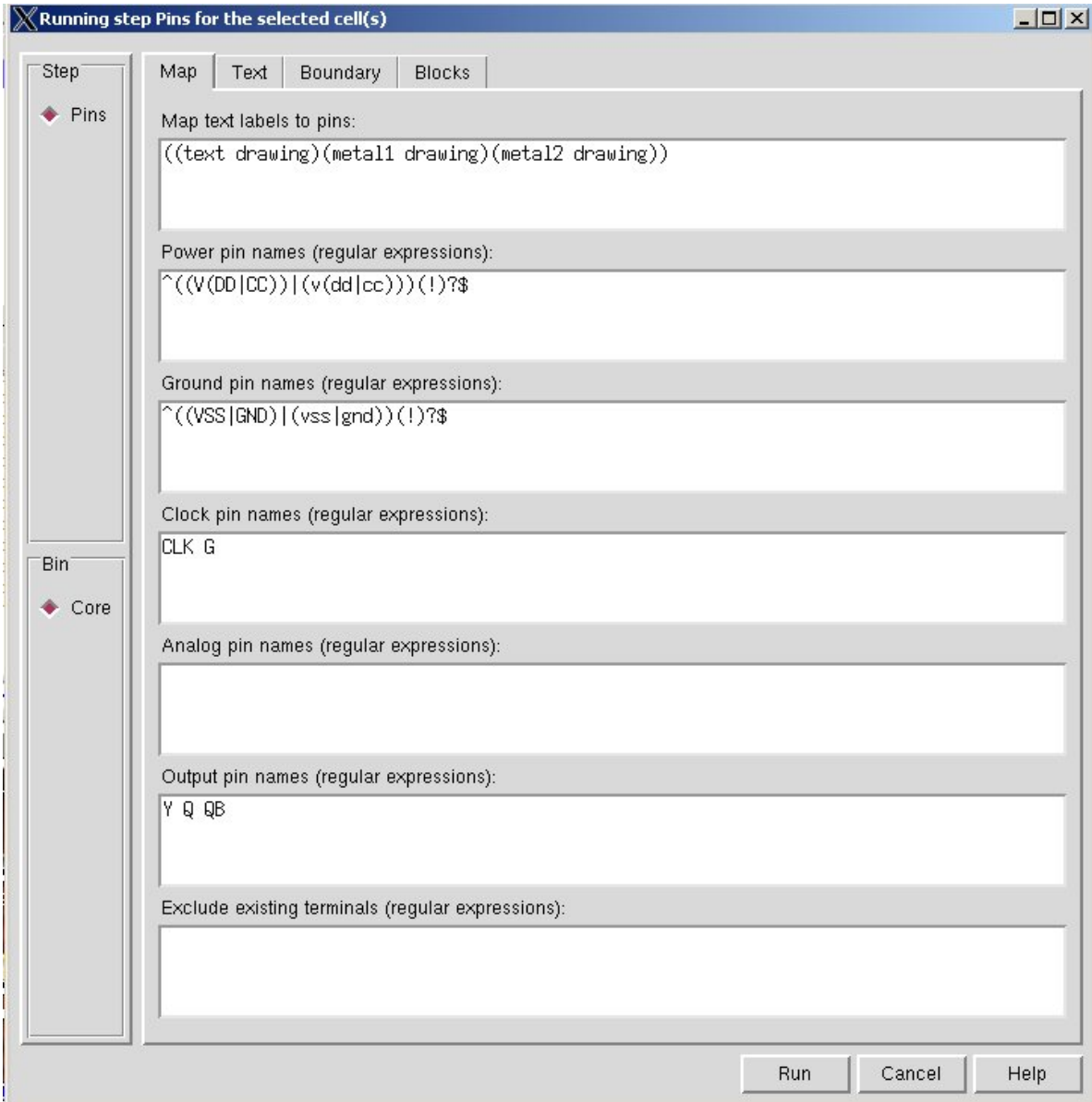
(Copyright ©2005, 2010, Cadence Design Systems, Inc. All rights reserved worldwide. Reprinted with permission.)

Figure 10.2: Opening a library in *Abstract*



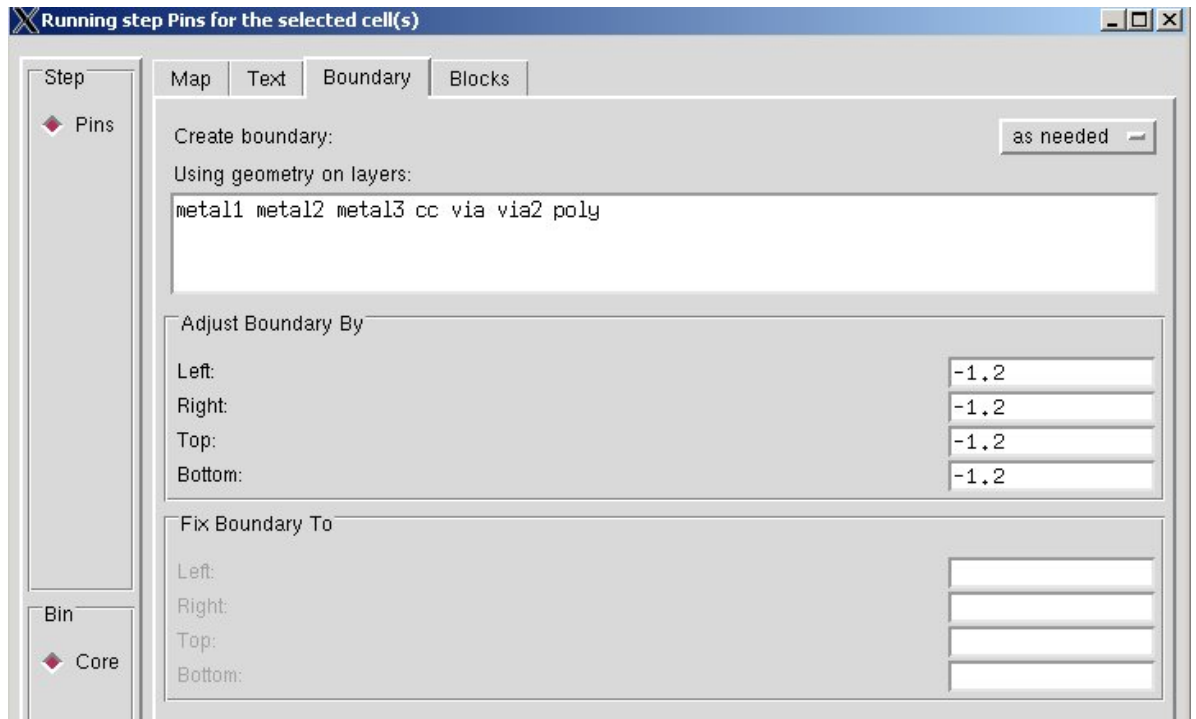
(Copyright ©2005, 2010, Cadence Design Systems, Inc. All rights reserved worldwide. Reprinted with permission.)

Figure 10.3: Cells in *abstract* after the library has been read



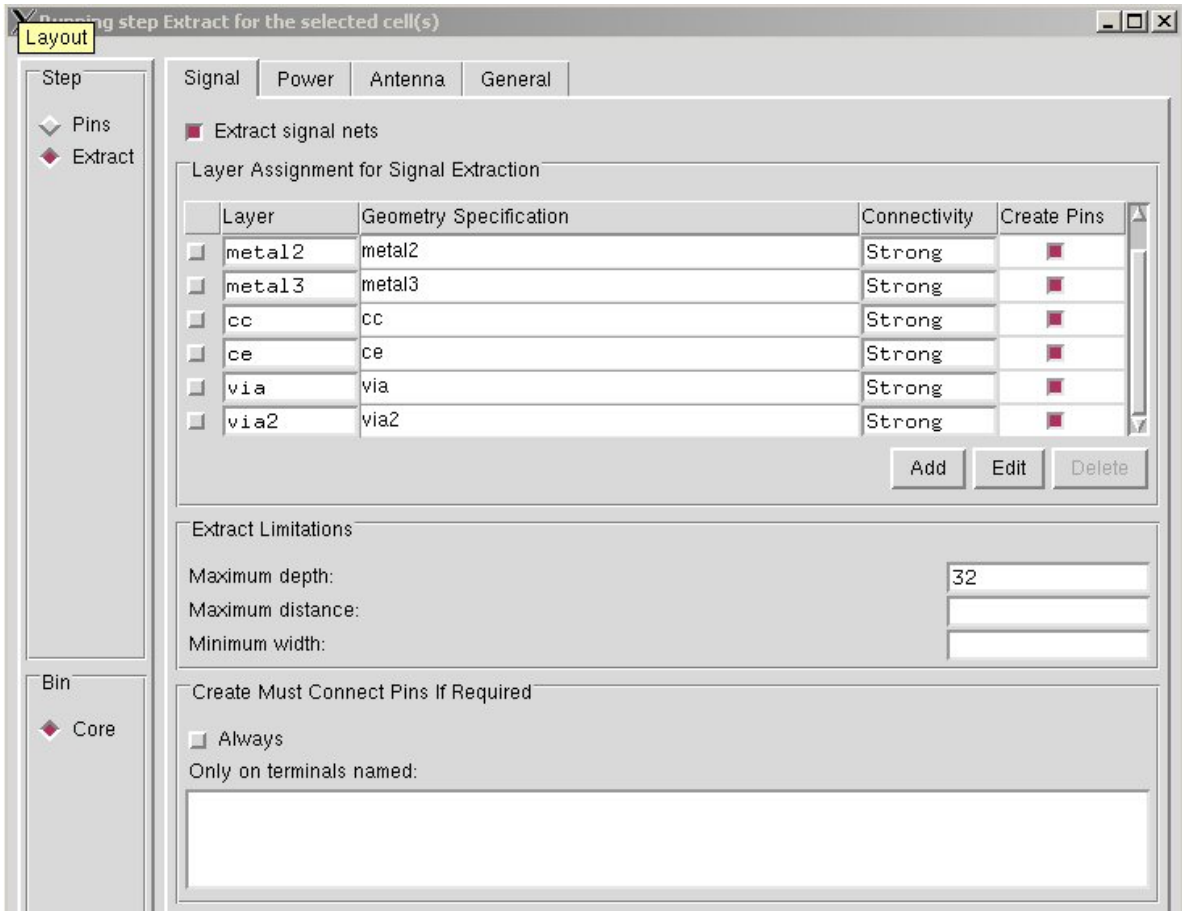
(Copyright ©2005, 2010, Cadence Design Systems, Inc. All rights reserved worldwide. Reprinted with permission.)

Figure 10.4: The **Map** tab in the **Pins** step dialog box



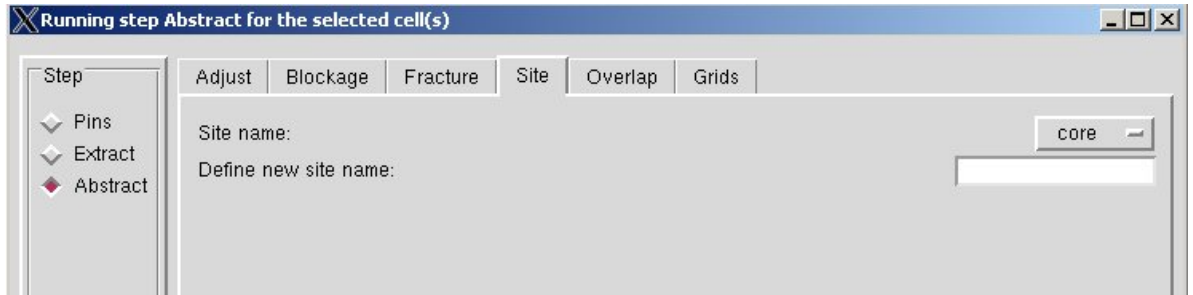
(Copyright © 2005, 2010, Cadence Design Systems, Inc. All rights reserved worldwide. Reprinted with permission.)

Figure 10.5: The **Boundary** tab in the **Pins** step dialog box



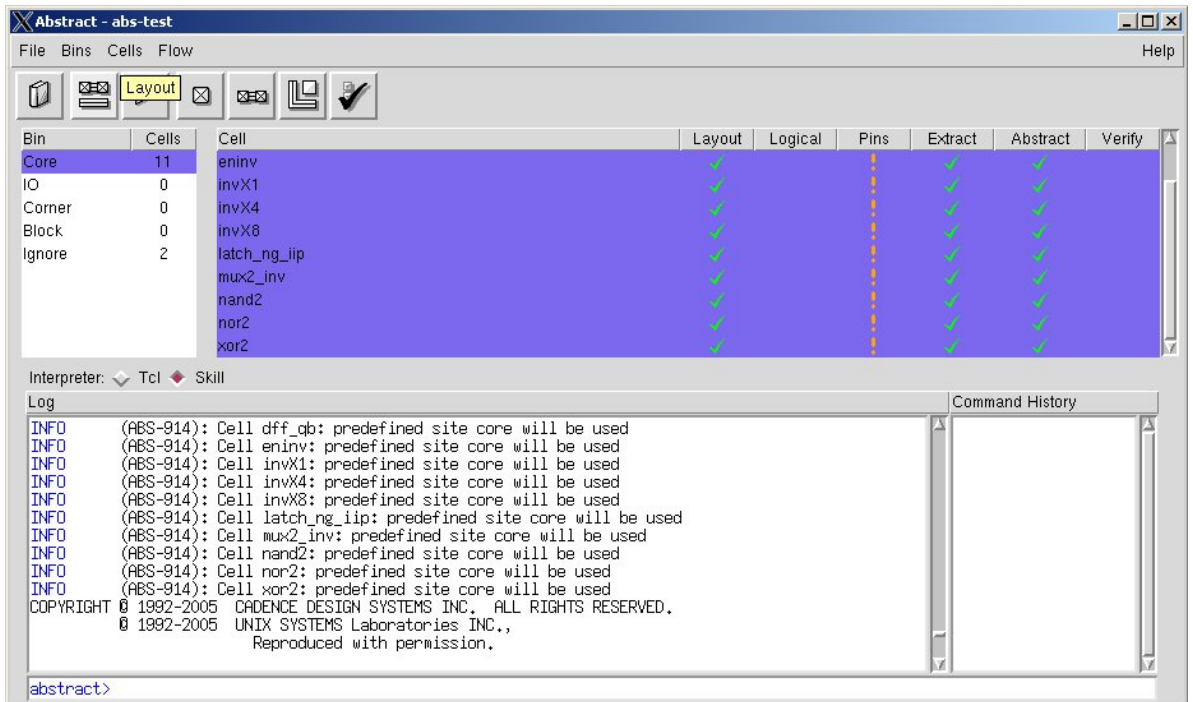
(Copyright ©2005, 2010, Cadence Design Systems, Inc. All rights reserved worldwide. Reprinted with permission.)

Figure 10.6: Extract step dialog box



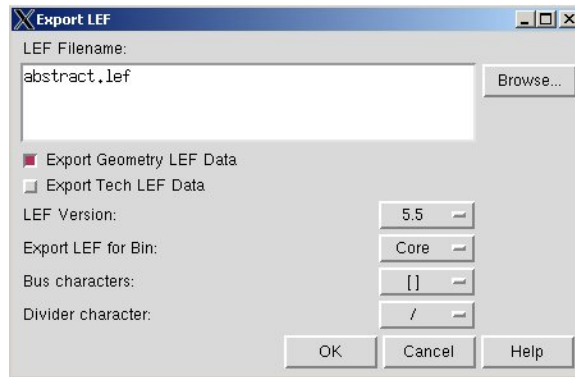
(Copyright © 2005, 2010, Cadence Design Systems, Inc. All rights reserved worldwide. Reprinted with permission.)

Figure 10.7: Site tab in the Abstract step dialog box



(Copyright © 2005, 2010, Cadence Design Systems, Inc. All rights reserved worldwide. Reprinted with permission.)

Figure 10.8: Abstract window with the Layout, Pins, Extract and Abstract steps completed



(Copyright ©2005, 2010, Cadence Design Systems, Inc. All rights reserved worldwide. Reprinted with permission.)

Figure 10.9: Dialog box for exporting **LEF** information