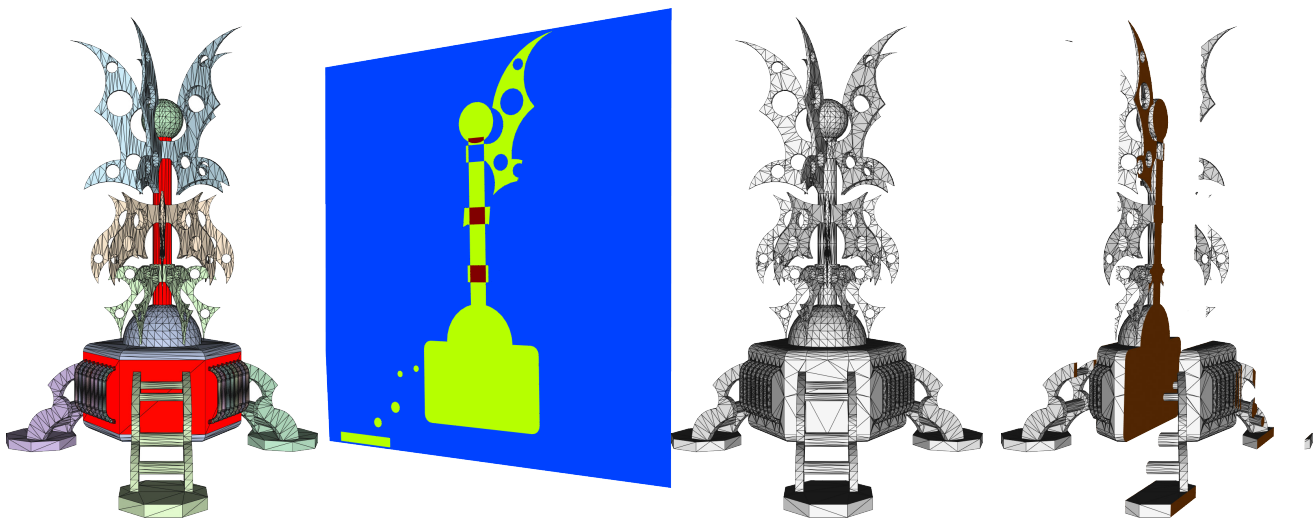
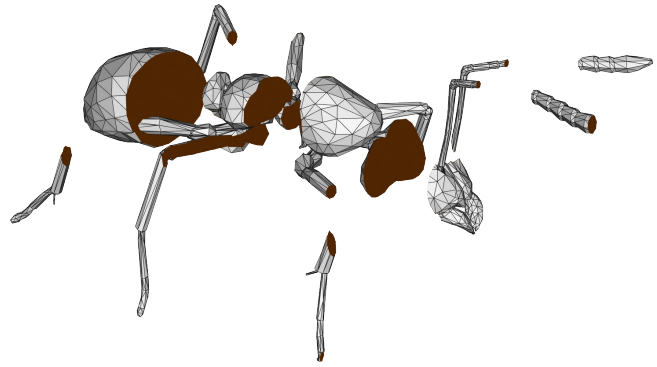
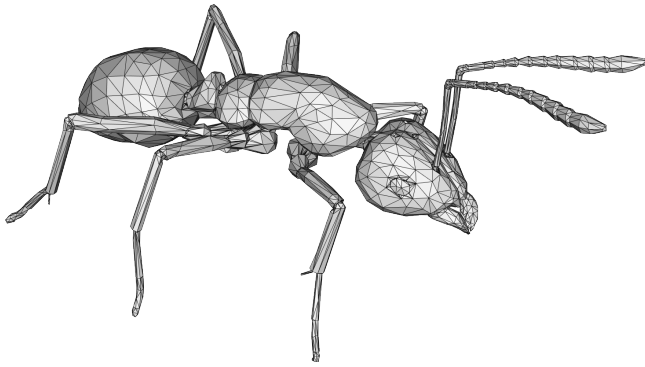
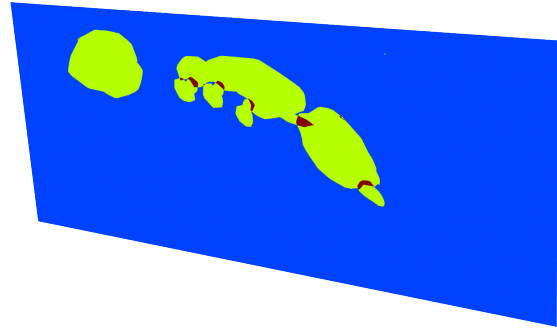
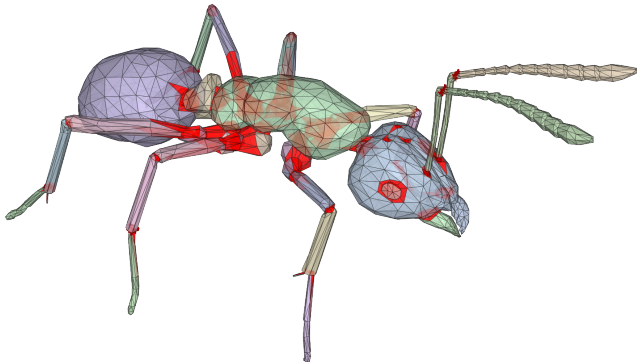
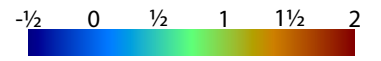


# Robust Inside-Outside Segmentation using Generalized Winding Numbers: Supplemental Material

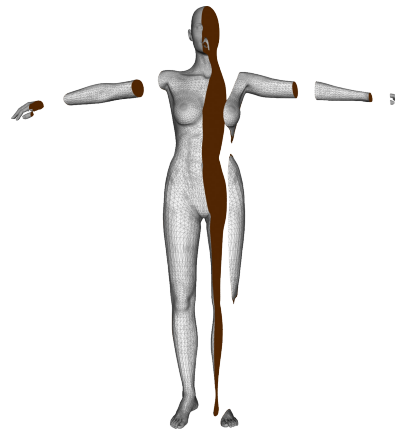
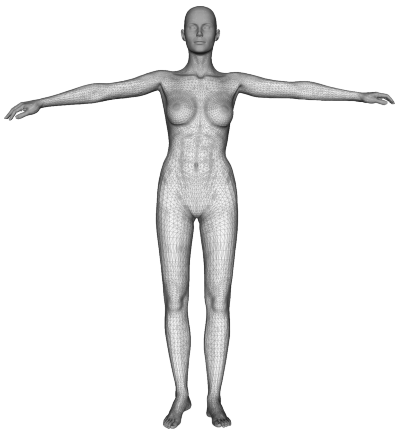
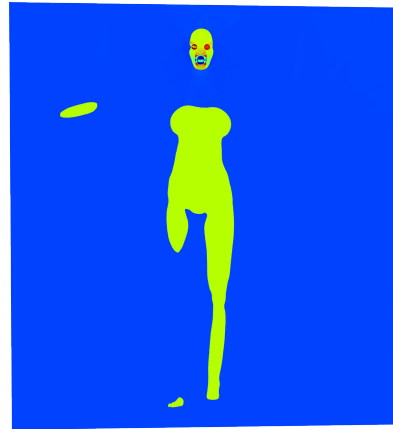
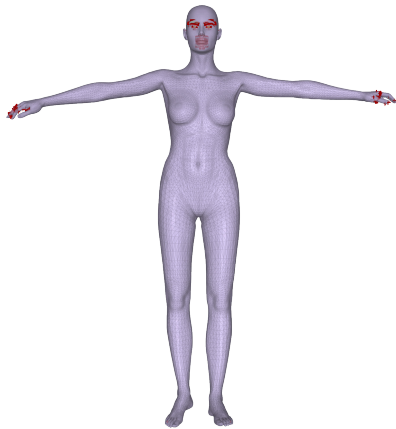
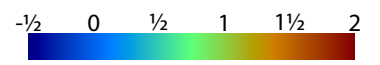
Alec Jacobson<sup>1</sup>   Ladislav Kavan<sup>2,1</sup>   Olga Sorkine-Hornung<sup>1</sup>  
<sup>1</sup>ETH Zurich   <sup>2</sup>University of Pennsylvania



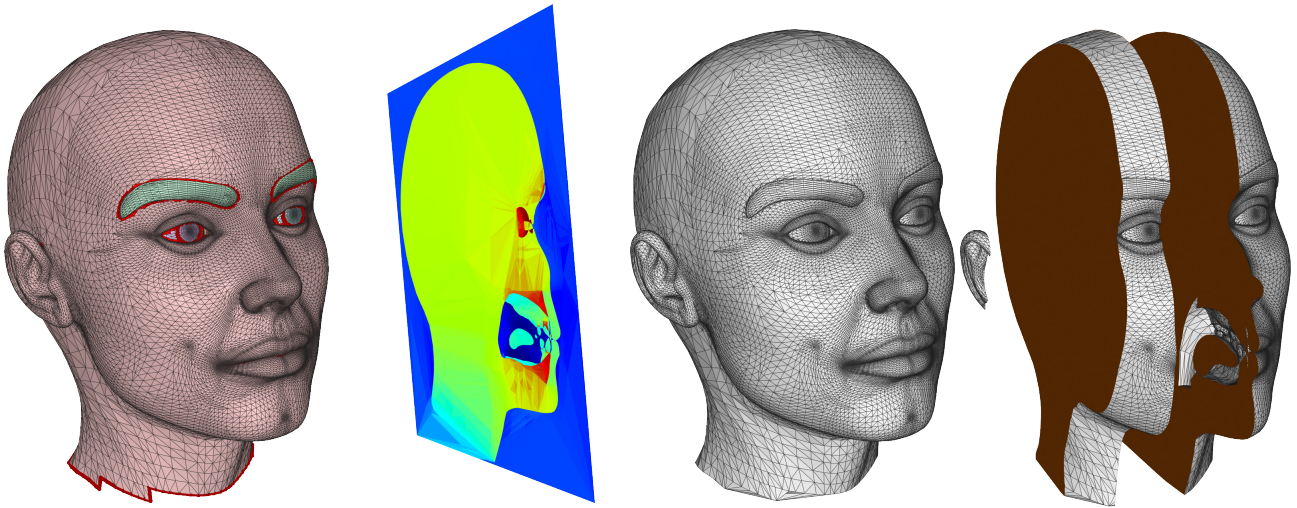
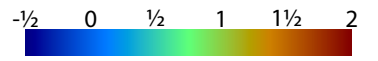
*Alien Space-object*  $\partial F: 0$ , si: 1686, cc: 32, nme: 0



Ant  $\partial F$ : 152, si: 1578, cc: 62, nme: 1

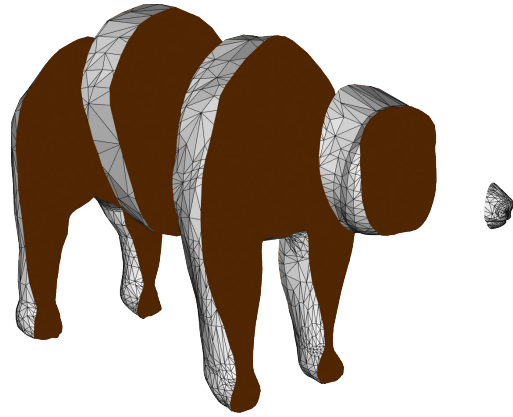
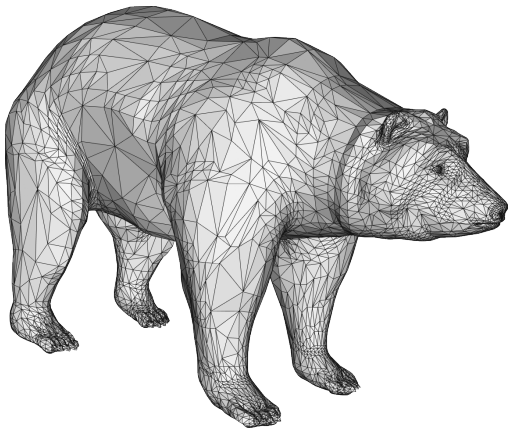
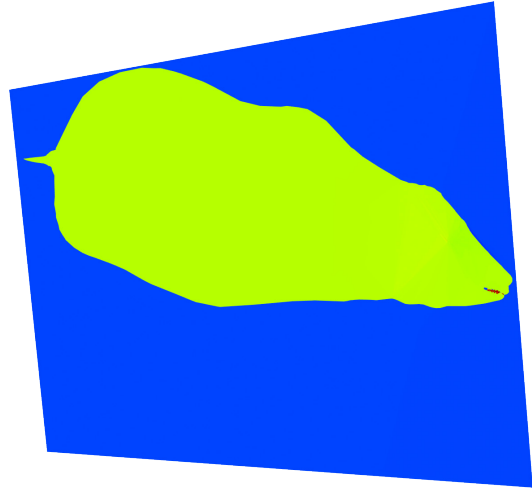
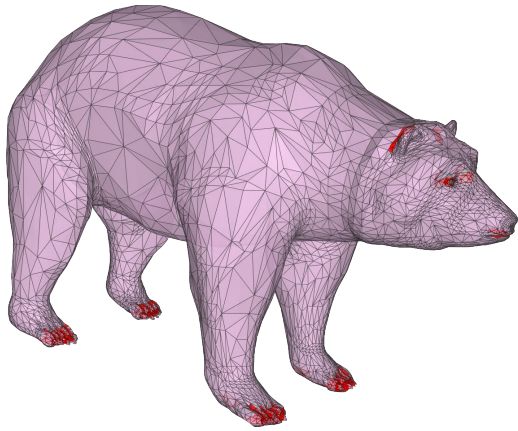
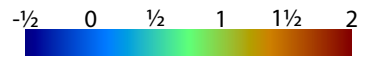


*Ballet Woman*  $\partial F$ : 1714, si: 9734, cc: 44, nme: 0

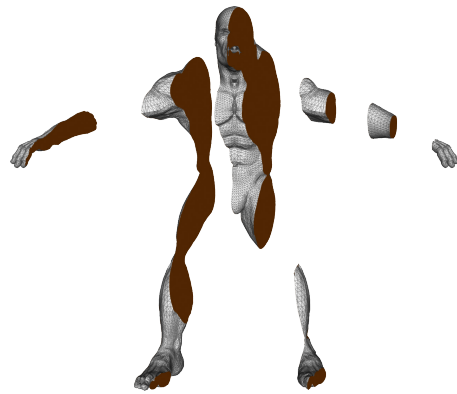
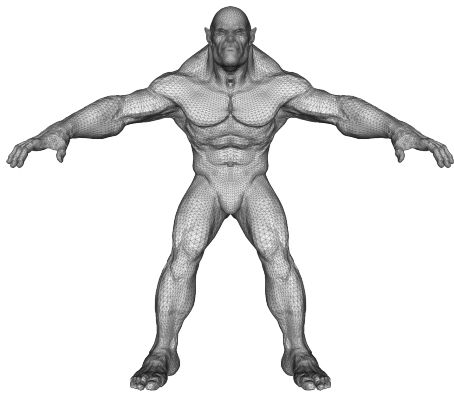
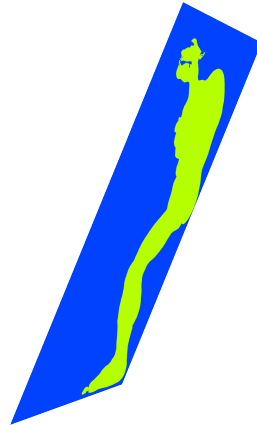
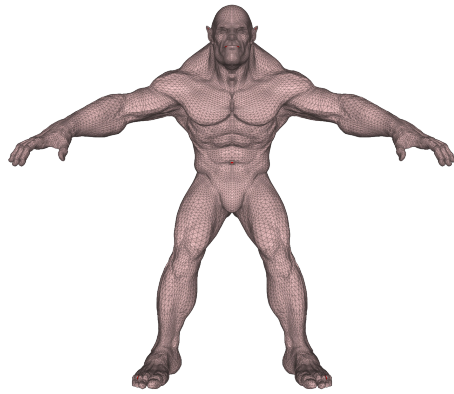
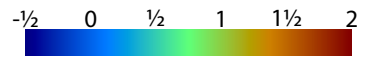


*Ballet Woman's Head*  $\partial F$ : 1146, si: 8660, cc: 44, nme: 0

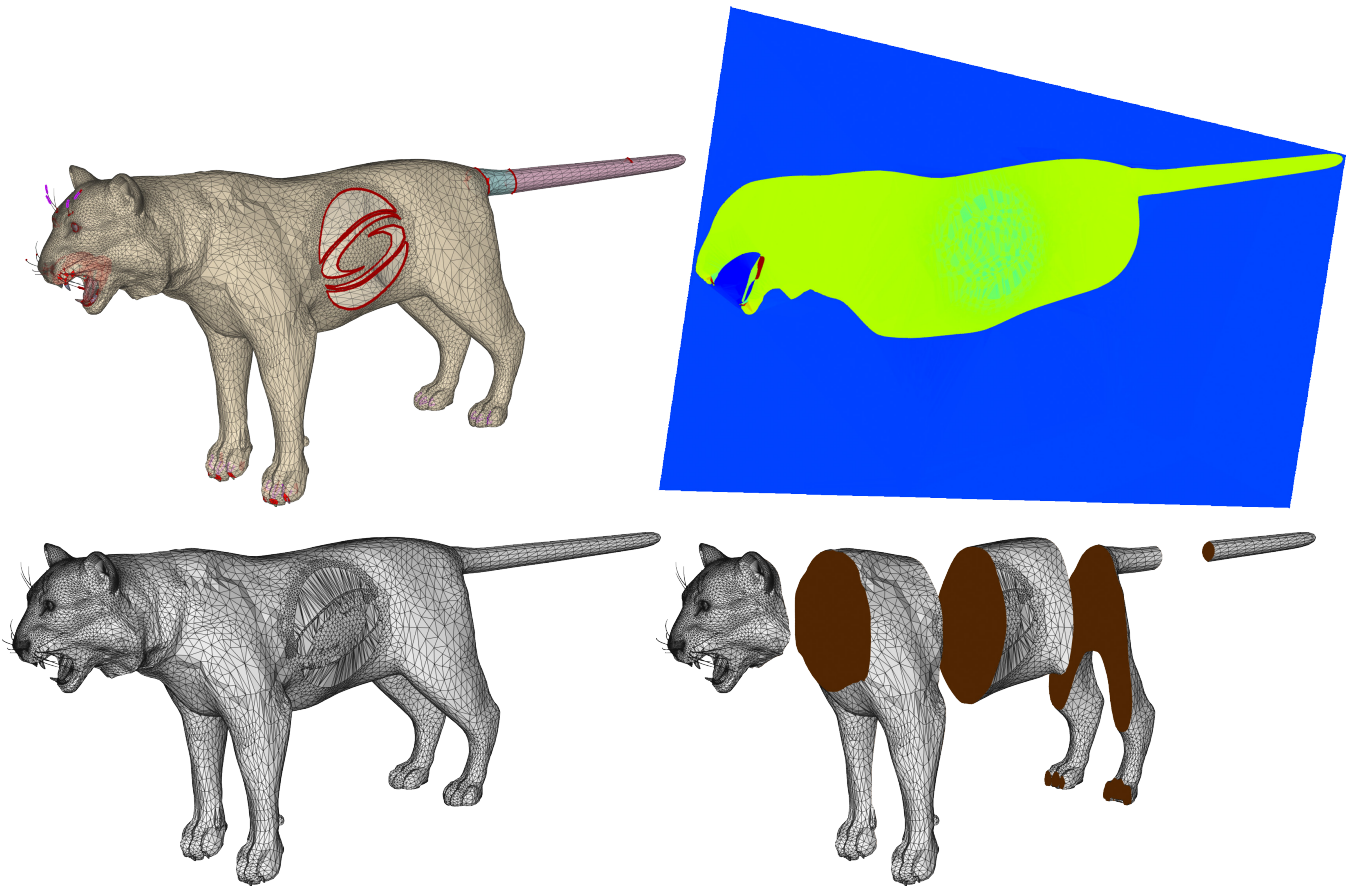




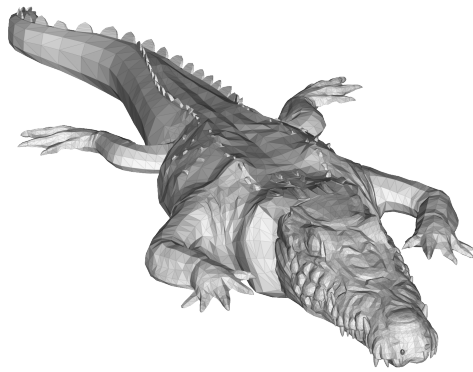
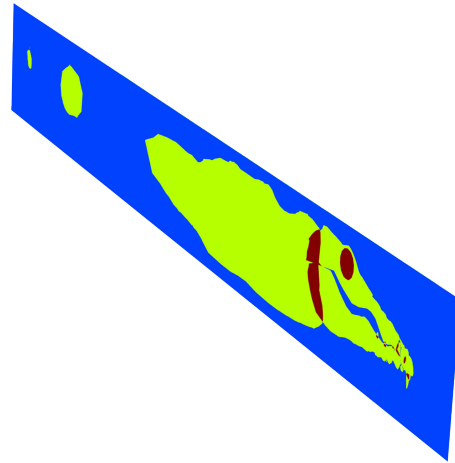
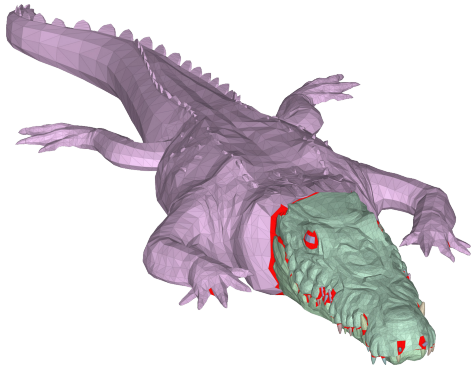
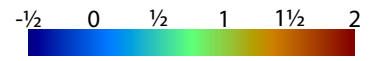
*Bear* ∂F: 320, si: 5572, cc: 37, nme: 0



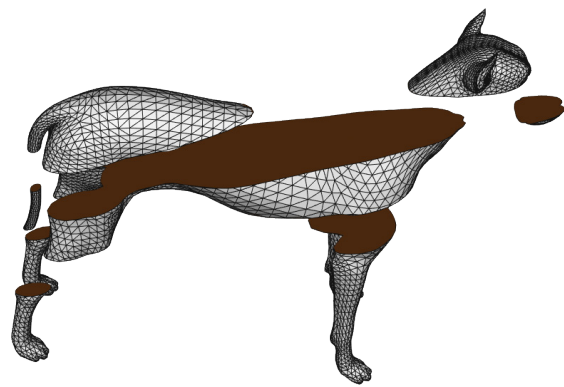
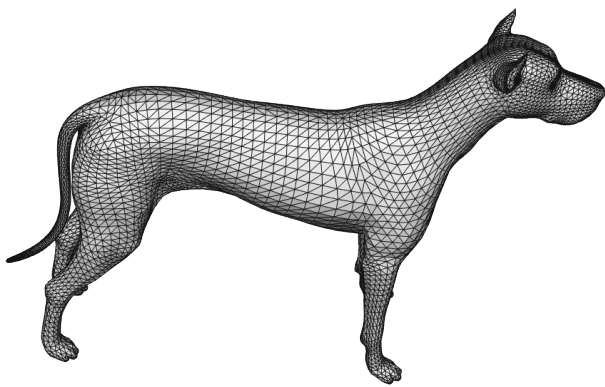
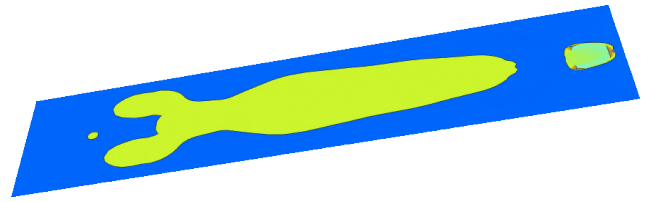
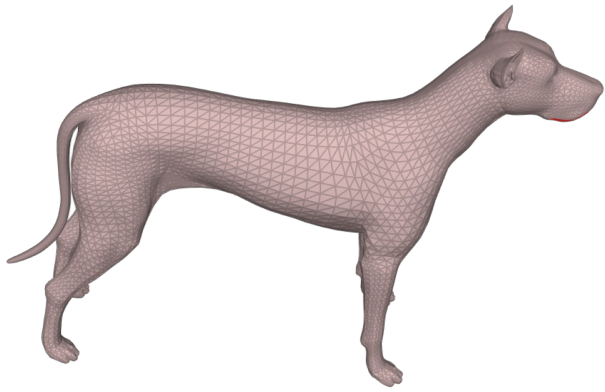
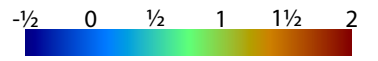
*Beast*  $\partial$  F: 0, si: 969, cc: 1, nme: 0



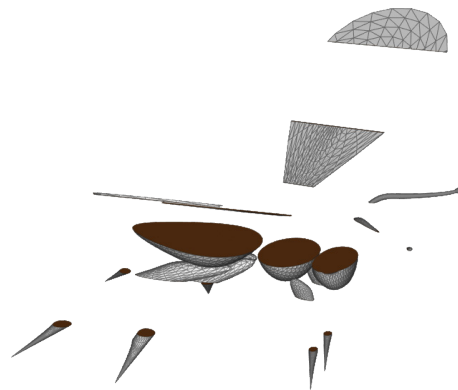
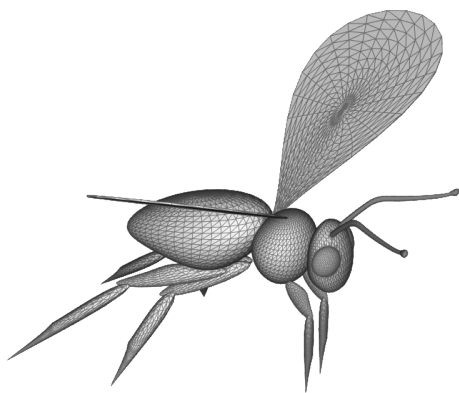
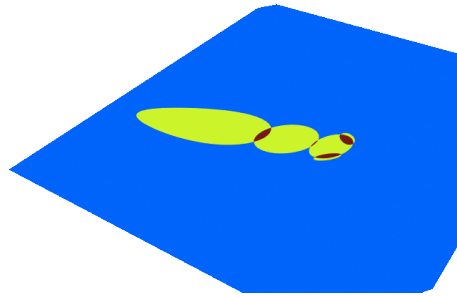
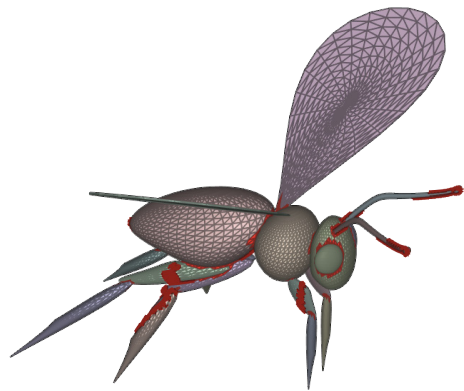
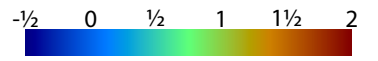
*Big SigCat*  $\partial F$ : 1020, si: 3442, cc: 65, nme: 344



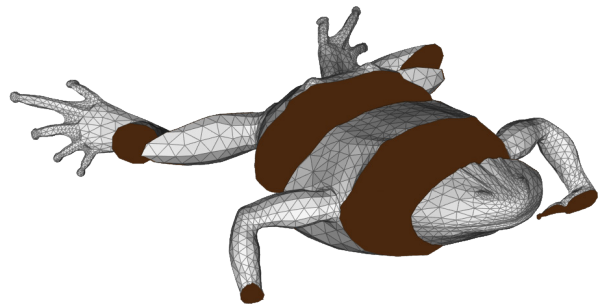
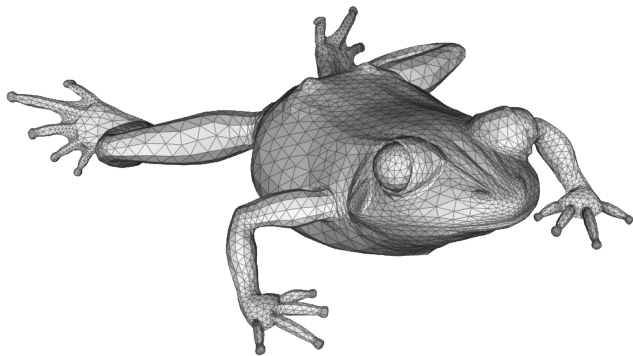
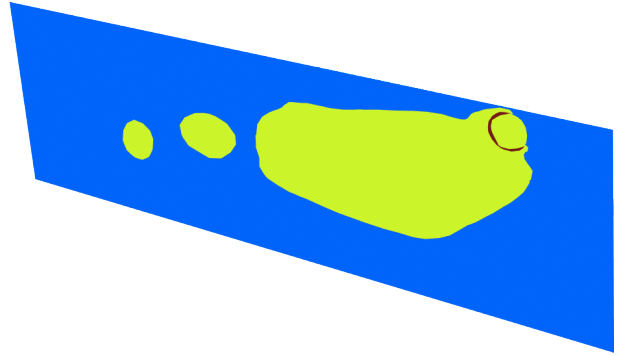
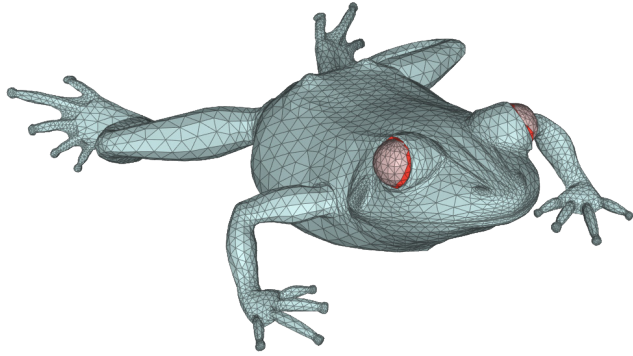
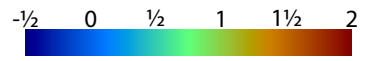
*Crocodile*  $\partial F: 0$ , si: 5236, cc: 65, nme: 0



*Dog*  $\partial F$ : 56, si: 0, cc: 1, nme: 0

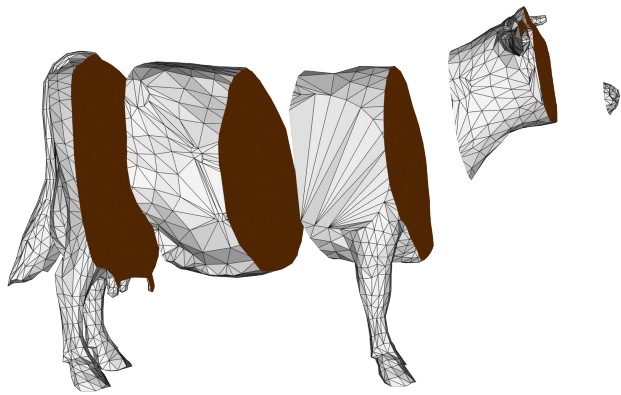
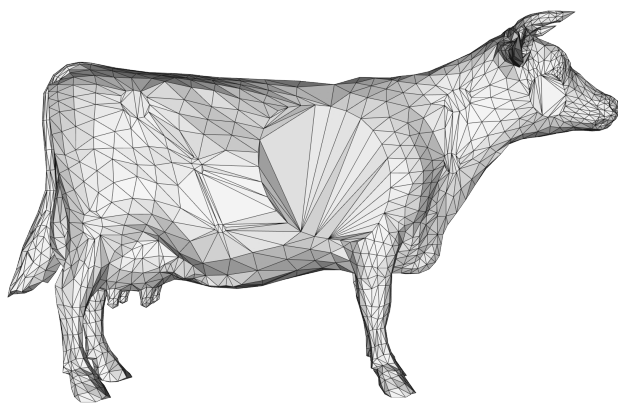
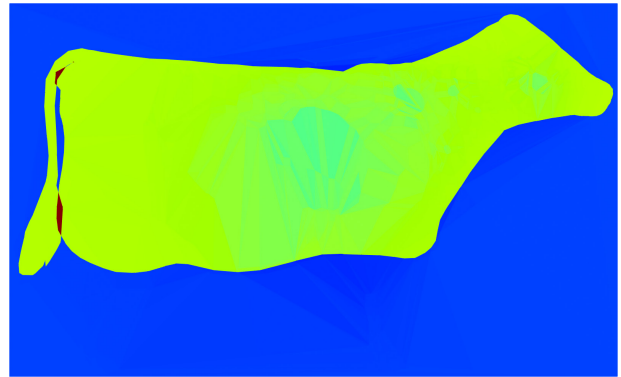
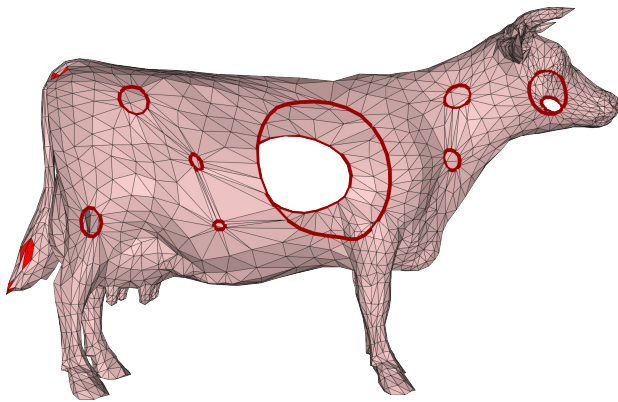
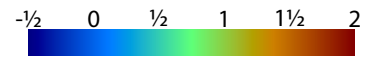


*Flying Bug*  $\partial F$ : 1200, si: 1731, cc: 25, nme: 0



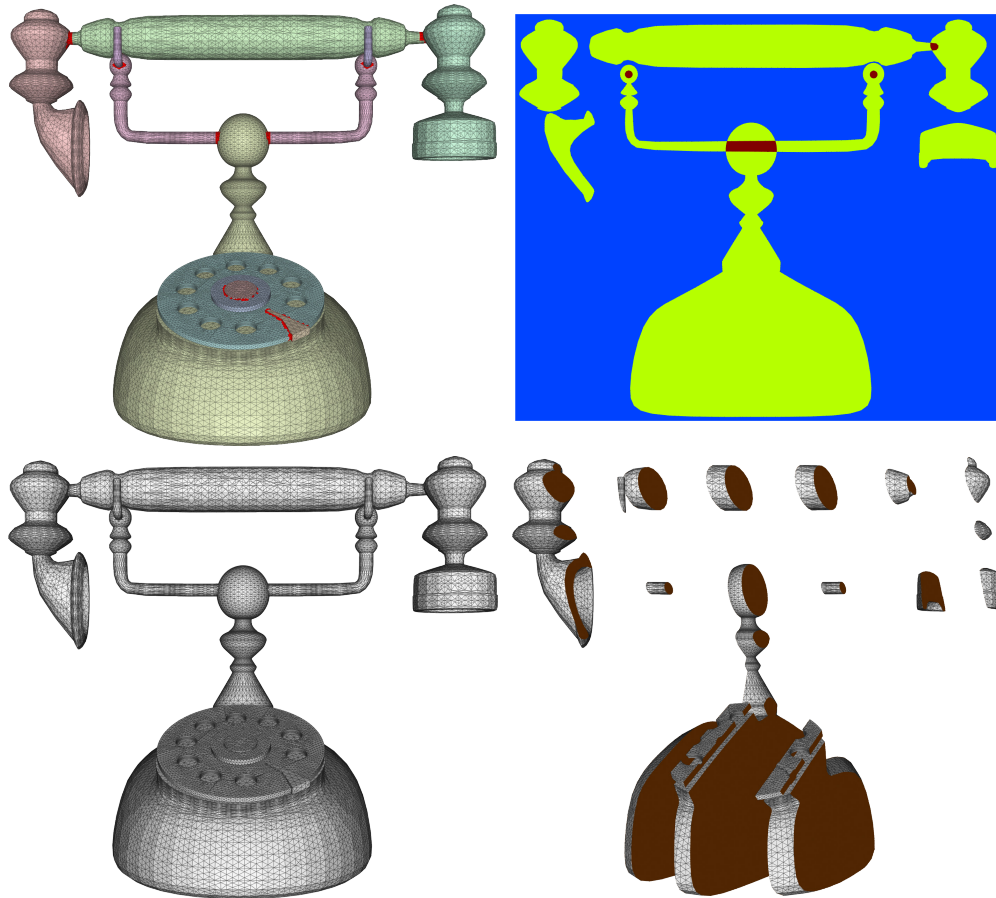
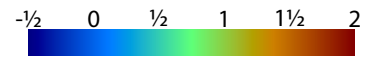
Frog  $\partial F$ : 0, si: 316, cc: 3, nme: 0



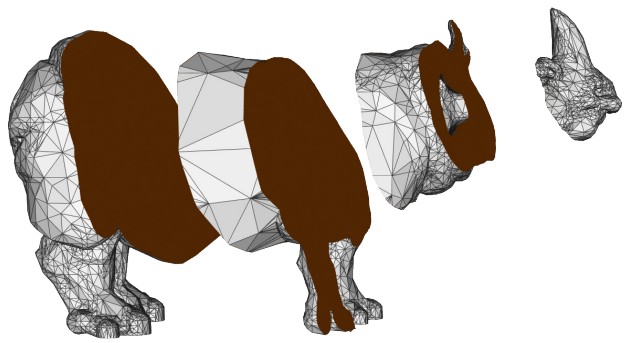
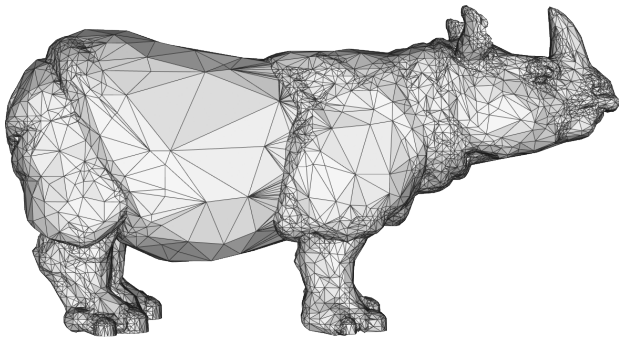
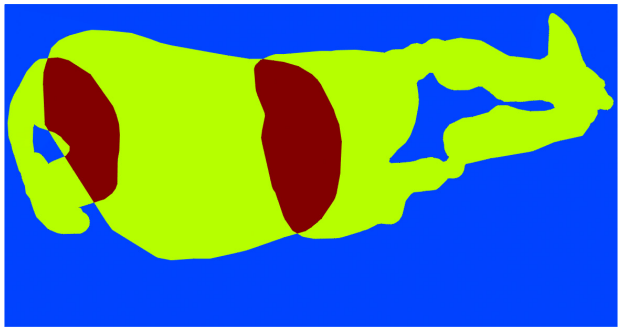
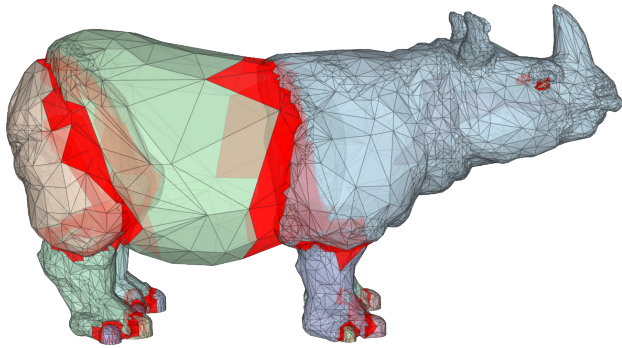
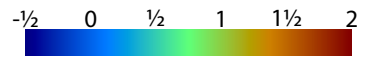


Holey Cow  $\partial F$ : 206, si: 83, cc: 1, nme: 0

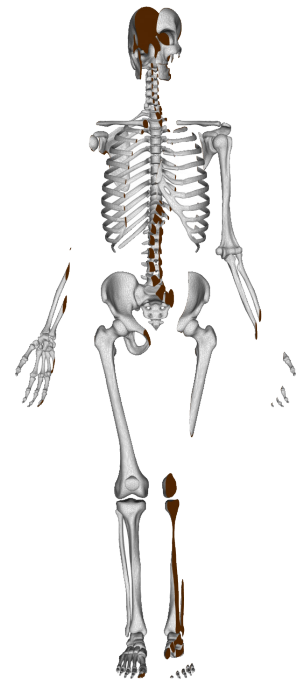
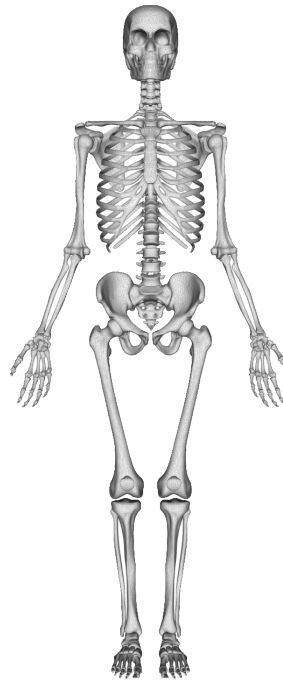
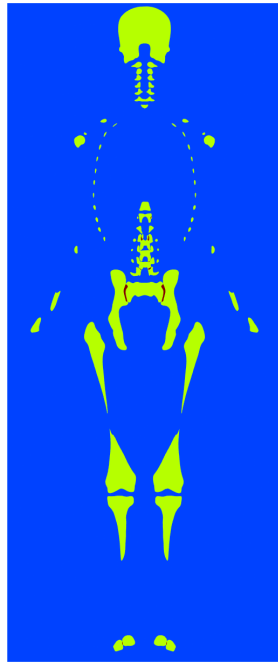
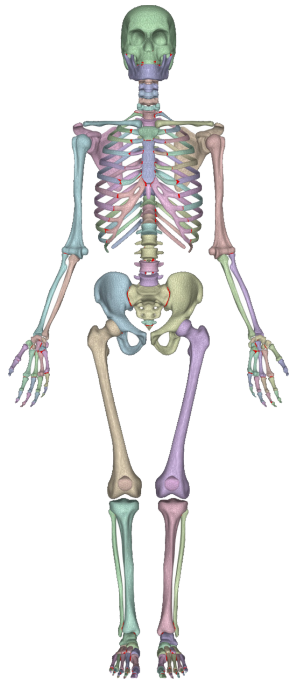
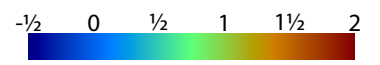




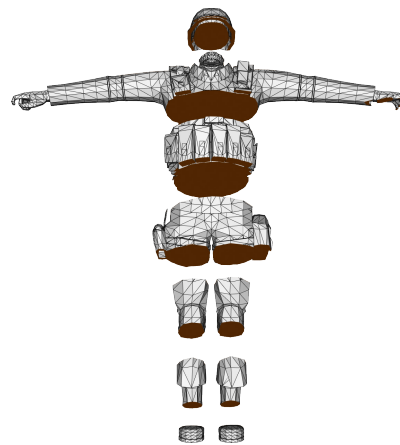
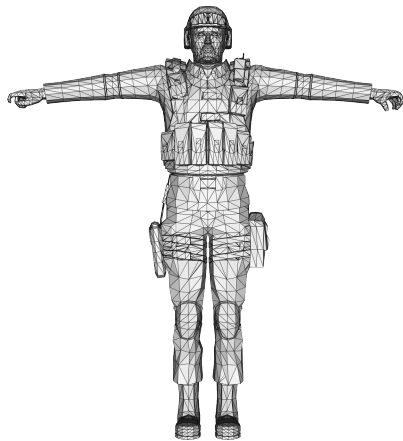
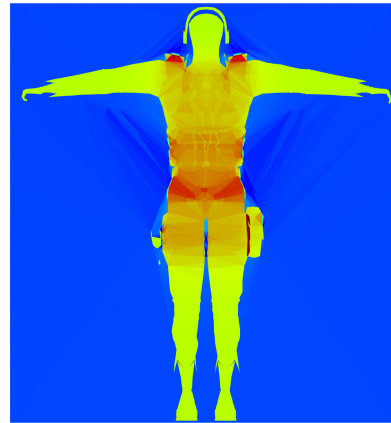
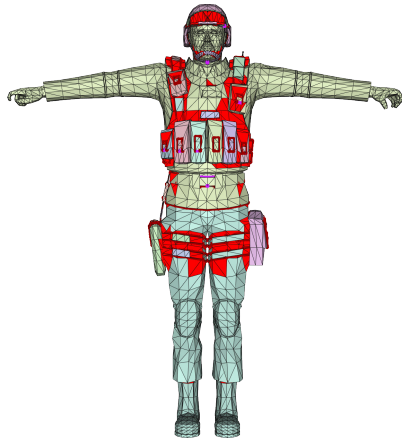
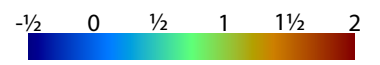
Phone  $\partial F: 0$ , si: 1576, cc: 11, nme: 3



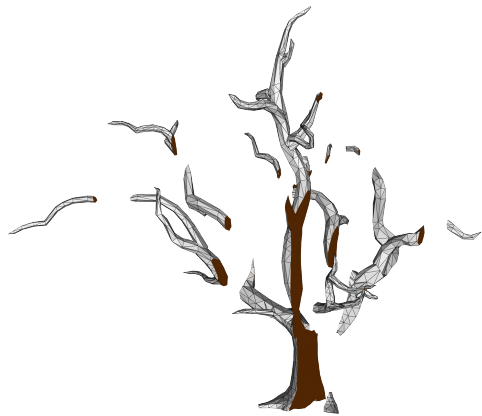
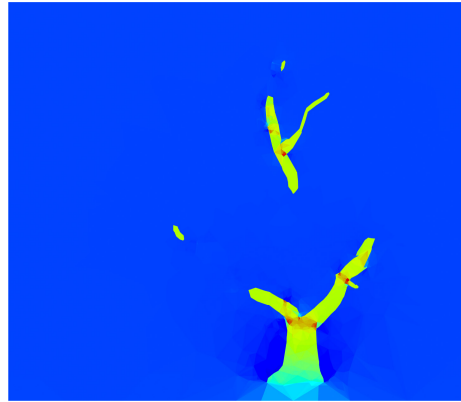
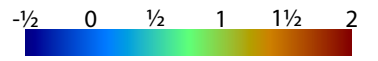
*Rhino*  $\partial F$ : 23, si: 2150, cc: 26, nme: 0



*Skeleton* ∂F: 0, si: 194, cc: 4095, nme: 0



SWAT man ∂F: 551, si: 2806, cc: 51, nme: 24



Tree  $\partial F$ : 1097, si: 386, cc: 32, nme: 0